

DATASHEET

Beta-enolase Rabbit Polyclonal Antibody

CAT. NO. APA14321

KEY FEATURES

Target	Beta-enolase	Source / Host	Rabbit
Reactivity	Human, Mouse, Rat	Clonality	Polyclonal
Applications	WB	Conjugation	Unconjugated
Form / Buffer	Liquid in 0.42% Potassium phosphate, 0.87% Sodium chloride, pH 7.3, 30% glycerol, and 0.01% sodium azide.		Storage at-20°C

BACKGROUND

Enolase that catalyzes the conversion of 2-phosphoglycerate to phosphoenolpyruvate in glycolysis and the reverse reaction in gluconeogenesis. Appears to have a function in striated muscle development and regeneration.

APPLICATION

To ensure optimal assay performance, AREX recommends conducting reagent titration tailored to each testing system for optimal detection results.

WB	1:500 - 1:1000
----	----------------

*Results are sample-specific. Please refer to your local assay conditions and test parameters for reference.

PRODUCT OVERVIEW

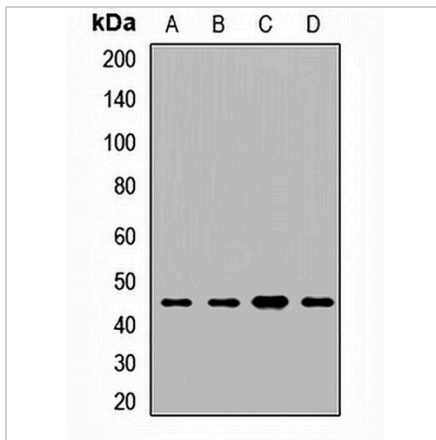
Description	Rabbit polyclonal antibody to Beta-enolase
Specificity	Recognizes endogenous levels of Beta-enolase protein.
Antibody Type	Primary antibody
Immunogen	Recombinant fusion protein of human Beta-enolase
Purification	The antibody was purified by immunogen affinity chromatography.
Molecular Weight	Predicted: 42; Observed: 46 kD
Form/Buffer	Liquid in 0.42% Potassium phosphate, 0.87% Sodium chloride, pH 7.3, 30% glycerol, and 0.01% sodium azide.
Alternative Names	Beta-enolase; 2-phospho-D-glycerate hydro-lyase; Enolase 3; Muscle-specific enolase; MSE; Skeletal muscle enolase
Gene Symbol	ENO3
Entrez Gene	2027(Human); 13808(Mouse); 25438(Rat)
SwissProt	P13929(Human); P21550(Mouse); P15429(Rat)

*AREX continuously optimizes our products. Webpage content may not reflect the latest updates. For inquiries, please contact info@arexbio.com or your local distributor.

*Clone Number, Reactivity, Source/Host and Clonality can be found in the product name and Key Features section above.

DATASHEET**Beta-enolase Rabbit Polyclonal Antibody**

CAT. NO. APA14321

DATA

Western blot analysis of Beta-enolase expression in A549 (A), HeLa (B), mouse heart (C), rat heart (D) whole cell lysates. (Predicted band size: 42; 44; 46 kD; Observed band size: 46 kD)

STORAGE

Store at 4°C short term. For long term storage, store at -20°C, avoiding freeze/thaw cycles.

NOTE

For Research Use Only. Not for diagnostic, therapeutics, prophylactic or in vivo use.