

DATASHEET

GART Rabbit Polyclonal Antibody

CAT. NO. APA14325

KEY FEATURES

Target	GART	Source / Host	Rabbit
Reactivity	Human, Mouse, Rat	Clonality	Polyclonal
Applications	WB	Conjugation	Unconjugated
Form / Buffer	Liquid in 0.42% Potassium phosphate, 0.87% Sodium chloride, pH 7.3, 30% glycerol, and 0.01% sodium azide.		Storage at -20°C

BACKGROUND

Trifunctional enzyme that catalyzes three distinct reactions as part of the 'de novo' inosine monophosphate biosynthetic pathway.

APPLICATION

To ensure optimal assay performance, AREX recommends conducting reagent titration tailored to each testing system for optimal detection results.

WB	1:500 - 1:2000
----	----------------

*Results are sample-specific. Please refer to your local assay conditions and test parameters for reference.

PRODUCT OVERVIEW

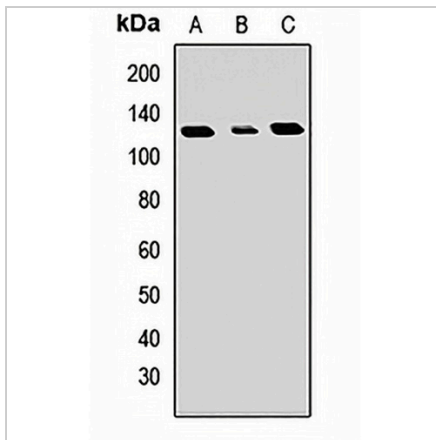
Description	Rabbit polyclonal antibody to GART
Specificity	Recognizes endogenous levels of GART protein.
Antibody Type	Primary antibody
Immunogen	Recombinant fusion protein of human GART
Purification	The antibody was purified by immunogen affinity chromatography.
Molecular Weight	Predicted: 46; Observed: 120 kD
Form/Buffer	Liquid in 0.42% Potassium phosphate, 0.87% Sodium chloride, pH 7.3, 30% glycerol, and 0.01% sodium azide.
Alternative Names	PGFT; PRGS; Trifunctional purine biosynthetic protein adenosine-3
Gene Symbol	GART
Entrez Gene	2618(Human); 14450(Mouse)
SwissProt	P22102(Human); Q64737(Mouse)

*AREX continuously optimizes our products. Webpage content may not reflect the latest updates. For inquiries, please contact info@arexbio.com or your local distributor.

*Clone Number, Reactivity, Source/Host and Clonality can be found in the product name and Key Features section above.

DATASHEET**GART Rabbit Polyclonal Antibody**

CAT. NO. APA14325

DATA

Western blot analysis of GART expression in HepG2 (A), HeLa (B), mouse liver (C) whole cell lysates. (Predicted band size: 46; 107 kD; Observed band size: 120 kD)

STORAGE

Store at 4°C short term. For long term storage, store at -20°C, avoiding freeze/thaw cycles.

NOTE

For Research Use Only. Not for diagnostic, therapeutics, prophylactic or in vivo use.