

DATASHEET

GPS2 Rabbit Polyclonal Antibody

CAT. NO. APA14327

KEY FEATURES

Target	GPS2	Source / Host	Rabbit
Reactivity	Human, Mouse, Rat	Clonality	Polyclonal
Applications	WB	Conjugation	Unconjugated
Form / Buffer	Liquid in 0.42% Potassium phosphate, 0.87% Sodium chloride, pH 7.3, 30% glycerol, and 0.01% sodium azide.		Storage at-20°C

BACKGROUND

Key regulator of inflammation, lipid metabolism and mitochondrion homeostasis that acts by inhibiting the activity of the ubiquitin-conjugating enzyme UBE2N/Ubc13, thereby inhibiting 'Lys-63'-linked ubiquitination . In the nucleus, can both acts as a corepressor and coactivator of transcription, depending on the context . Acts as a transcription coactivator in adipocytes by promoting the recruitment of PPARG to promoters: acts by inhibiting the activity of the ubiquitin-conjugating enzyme UBE2N/Ubc13, leading to stabilization of KDM4A and subsequent histone H3 'Lys-9' (H3K9) demethylation . Promotes cholesterol efflux by acting as a transcription coactivator .

APPLICATION

To ensure optimal assay performance, AREX recommends conducting reagent titration tailored to each testing system for optimal detection results.

WB	1:500 - 1:2000
----	----------------

*Results are sample-specific. Please refer to your local assay conditions and test parameters for reference.

PRODUCT OVERVIEW

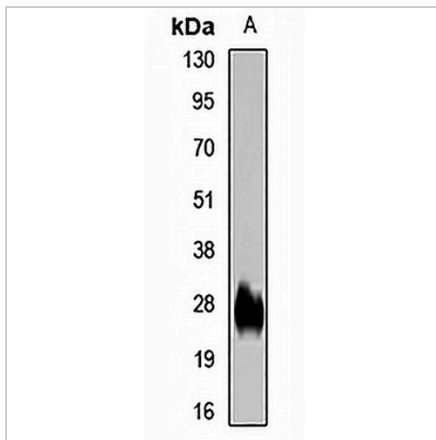
Description	Rabbit polyclonal antibody to GPS2
Specificity	Recognizes endogenous levels of GPS2 protein.
Antibody Type	Primary antibody
Immunogen	KLH-conjugated synthetic peptide of mouse GPS2GPS2
Purification	The antibody was purified by immunogen affinity chromatography.
Molecular Weight	Predicted: 10-29; Observed: 23-30 kD
Form/Buffer	Liquid in 0.42% Potassium phosphate, 0.87% Sodium chloride, pH 7.3, 30% glycerol, and 0.01% sodium azide.
Alternative Names	G protein pathway suppressor 2; GPS-2
Gene Symbol	GPS2
Entrez Gene	2874(Human)
SwissProt	Q13227(Human)

*AREX continuously optimizes our products. Webpage content may not reflect the latest updates. For inquiries, please contact info@arexbio.com or your local distributor.

*Clone Number, Reactivity, Source/Host and Clonality can be found in the product name and Key Features section above.

DATASHEET**GPS2 Rabbit Polyclonal Antibody**

CAT. NO. APA14327

DATA

Western blot analysis of GPS2 expression in BXPC3 (A) whole cell lysates. (Predicted band size: 10-29; 103; 121-122 kD; Observed band size: 23-30 kD)

STORAGE

Store at 4°C short term. For long term storage, store at -20°C, avoiding freeze/thaw cycles.

NOTE

For Research Use Only. Not for diagnostic, therapeutics, prophylactic or in vivo use.