

DATASHEET

GPx-7 Rabbit Polyclonal Antibody

CAT. NO. APA14328

KEY FEATURES

Target	GPx-7	Source / Host	Rabbit
Reactivity	Human, Mouse	Clonality	Polyclonal
Applications	WB, IHC	Conjugation	Unconjugated
Form / Buffer	Liquid in 0.42% Potassium phosphate, 0.87% Sodium chloride, pH 7.3, 30% glycerol, and 0.01% sodium azide.		Storage at -20°C

BACKGROUND

It protects esophageal epithelia from hydrogen peroxide-induced oxidative stress. It suppresses acidic bile acid-induced reactive oxygen species (ROS) and protects against oxidative DNA damage and double-strand breaks.

APPLICATION

To ensure optimal assay performance, AREX recommends conducting reagent titration tailored to each testing system for optimal detection results.

WB	1:500 - 1:2000
IHC	1:50 - 1:200

*Results are sample-specific. Please refer to your local assay conditions and test parameters for reference.

PRODUCT OVERVIEW

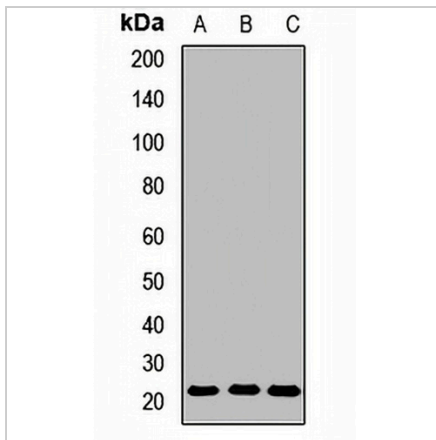
Description	Rabbit polyclonal antibody to GPx-7
Specificity	Recognizes endogenous levels of GPx-7 protein.
Antibody Type	Primary antibody
Immunogen	Recombinant fusion protein of human GPx-7
Purification	The antibody was purified by immunogen affinity chromatography.
Molecular Weight	Predicted: 20 kD; Observed: 21 kD
Form/Buffer	Liquid in 0.42% Potassium phosphate, 0.87% Sodium chloride, pH 7.3, 30% glycerol, and 0.01% sodium azide.
Alternative Names	GPX6; Glutathione peroxidase 7; GPx-7; GSHPx-7; CL683
Gene Symbol	GPX7
Entrez Gene	2882(Human); 67305(Mouse)
SwissProt	Q96SL4(Human); Q99LJ6(Mouse)

*AREX continuously optimizes our products. Webpage content may not reflect the latest updates. For inquiries, please contact info@arexbio.com or your local distributor.

*Clone Number, Reactivity, Source/Host and Clonality can be found in the product name and Key Features section above.

DATASHEET**GPx-7 Rabbit Polyclonal Antibody**

CAT. NO. APA14328

DATA

Western blot analysis of GPx-7 expression in SW480 (A), mouse brain (B), mouse heart (C) whole cell lysates. (Predicted band size: 20 kD; Observed band size: 21 kD)

STORAGE

Store at 4°C short term. For long term storage, store at -20°C, avoiding freeze/thaw cycles.

NOTE

For Research Use Only. Not for diagnostic, therapeutics, prophylactic or in vivo use.