

DATASHEET

Hemoglobin epsilon Rabbit Polyclonal Antibody

CAT. NO. APA14329

KEY FEATURES

Target	Hemoglobin epsilon	Source / Host	Rabbit
Reactivity	Human	Clonality	Polyclonal
Applications	WB	Conjugation	Unconjugated
Form / Buffer	Liquid in 0.42% Potassium phosphate, 0.87% Sodium chloride, pH 7.3, 30% glycerol, and 0.01% sodium azide.		Storage at -20°C

BACKGROUND

The epsilon chain is a beta-type chain of early mammalian embryonic hemoglobin.

APPLICATION

To ensure optimal assay performance, AREX recommends conducting reagent titration tailored to each testing system for optimal detection results.

WB	1:500 - 1:2000
----	----------------

*Results are sample-specific. Please refer to your local assay conditions and test parameters for reference.

PRODUCT OVERVIEW

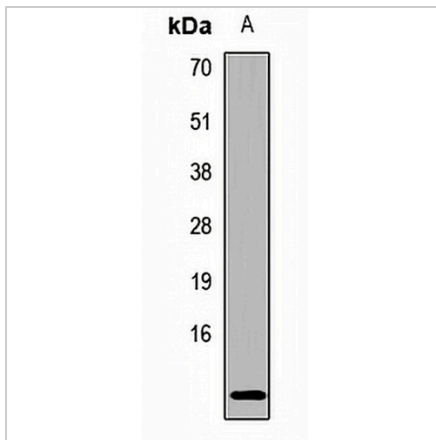
Description	Rabbit polyclonal antibody to Hemoglobin epsilon
Specificity	Recognizes endogenous levels of Hemoglobin epsilon protein.
Antibody Type	Primary antibody
Immunogen	Recombinant fusion protein of human Hemoglobin epsilon
Purification	The antibody was purified by immunogen affinity chromatography.
Molecular Weight	Predicted: 16 kD; Observed: 12 kD
Form/Buffer	Liquid in 0.42% Potassium phosphate, 0.87% Sodium chloride, pH 7.3, 30% glycerol, and 0.01% sodium azide.
Alternative Names	HBE; Hemoglobin subunit epsilon; Epsilon-globin; Hemoglobin epsilon chain
Gene Symbol	HBE1
Entrez Gene	3046(Human)
SwissProt	P02100(Human)

*AREX continuously optimizes our products. Webpage content may not reflect the latest updates. For inquiries, please contact info@arexbio.com or your local distributor.

*Clone Number, Reactivity, Source/Host and Clonality can be found in the product name and Key Features section above.

DATASHEET**Hemoglobin epsilon Rabbit Polyclonal Antibody**

CAT. NO. APA14329

DATA

Western blot analysis of Hemoglobin epsilon expression in K562 (A) whole cell lysates.
(Predicted band size: 16 kD; Observed band size: 12 kD)

STORAGE

Store at 4°C short term. For long term storage, store at -20°C, avoiding freeze/thaw cycles.

NOTE

For Research Use Only. Not for diagnostic, therapeutics, prophylactic or in vivo use.