

**DATASHEET**

**CD50 Rabbit Polyclonal Antibody**

CAT. NO. APA14331

**KEY FEATURES**

Target	CD50	Source / Host	Rabbit
Reactivity	Human	Clonality	Polyclonal
Applications	WB	Conjugation	Unconjugated
Form / Buffer	Liquid in 0.42% Potassium phosphate, 0.87% Sodium chloride, pH 7.3, 30% glycerol, and 0.01% sodium azide.		Storage at -20°C

**BACKGROUND**

Cell adhesion molecule that functions as a receptor ligand of the signaling receptor ITGAL:ITGB2/LFA-1 (lymphocyte-function associated (LFA) molecule 1) ensuring apoptotic neutrophil phagocytosis by macrophages molecule 1) ensuring apoptotic neutrophil phagocytosis by macrophages . Is also a ligand for integrin ITGAD/ITGB2 . Ligand of CD209 on dendritic cells (DC) through an integrin-independent mechanism that requires Ca(2+) and that forms a first contact between DC and resting T cell, facilitating the downstream DC-T cell clustering process and DC-induced proliferation of resting T Cells .

**APPLICATION**

To ensure optimal assay performance, AREX recommends conducting reagent titration tailored to each testing system for optimal detection results.

WB	1:500 - 1:2000
----	----------------

\*Results are sample-specific. Please refer to your local assay conditions and test parameters for reference.

**PRODUCT OVERVIEW**

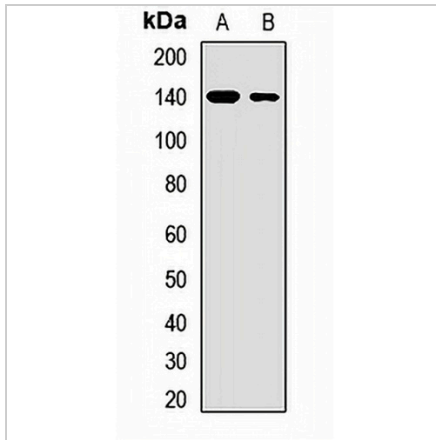
Description	Rabbit polyclonal antibody to CD50
Specificity	Recognizes endogenous levels of CD50 protein.
Antibody Type	Primary antibody
Immunogen	Recombinant fusion protein of human CD50
Purification	The antibody was purified by immunogen affinity chromatography.
Molecular Weight	Predicted: 59 kD; Observed: 140 kD
Form/Buffer	Liquid in 0.42% Potassium phosphate, 0.87% Sodium chloride, pH 7.3, 30% glycerol, and 0.01% sodium azide.
Alternative Names	Intercellular adhesion molecule 3; ICAM-3; CDw50; ICAM-R; CD50
Gene Symbol	ICAM3
Entrez Gene	3385(Human)
SwissProt	P32942(Human)

\*AREX continuously optimizes our products. Webpage content may not reflect the latest updates. For inquiries, please contact [info@arexbio.com](mailto:info@arexbio.com) or your local distributor.

\*Clone Number, Reactivity, Source/Host and Clonality can be found in the product name and Key Features section above.

**DATASHEET****CD50 Rabbit Polyclonal Antibody**

CAT. NO. APA14331

**DATA**

Western blot analysis of CD50 expression in A549 (A), SW480 (B) whole cell lysates.  
(Predicted band size: 59 kD; Observed band size: 140 kD)

**STORAGE**

Store at 4°C short term. For long term storage, store at -20°C, avoiding freeze/thaw cycles.

**NOTE**

For Research Use Only. Not for diagnostic, therapeutics, prophylactic or in vivo use.