

DATASHEET

ME1 Rabbit Polyclonal Antibody

CAT. NO. APA14332

KEY FEATURES

Target	ME1	Source / Host	Rabbit
Reactivity	Human, Mouse, Rat	Clonality	Polyclonal
Applications	WB	Conjugation	Unconjugated
Form / Buffer	Liquid in 0.42% Potassium phosphate, 0.87% Sodium chloride, pH 7.3, 30% glycerol, and 0.01% sodium azide.		Storage at -20°C

BACKGROUND

Catalyzes the oxidative decarboxylation of (S)-malate in the presence of NADP(+) and divalent metal ions, and decarboxylation of oxaloacetate.

APPLICATION

To ensure optimal assay performance, AREX recommends conducting reagent titration tailored to each testing system for optimal detection results.

WB	1:500 - 1:2000
----	----------------

*Results are sample-specific. Please refer to your local assay conditions and test parameters for reference.

PRODUCT OVERVIEW

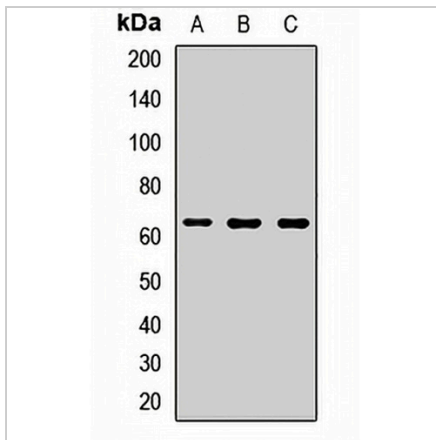
Description	Rabbit polyclonal antibody to ME1
Specificity	Recognizes endogenous levels of ME1 protein.
Antibody Type	Primary antibody
Immunogen	Recombinant fusion protein of human ME1
Purification	The antibody was purified by immunogen affinity chromatography.
Molecular Weight	Predicted: 55; Observed: 64 kD
Form/Buffer	Liquid in 0.42% Potassium phosphate, 0.87% Sodium chloride, pH 7.3, 30% glycerol, and 0.01% sodium azide.
Alternative Names	NADP-dependent malic enzyme; NADP-ME; Malic enzyme 1
Gene Symbol	ME1
Entrez Gene	4199(Human); 17436(Mouse)
SwissProt	P48163(Human); P06801(Mouse); P13697(Rat)

*AREX continuously optimizes our products. Webpage content may not reflect the latest updates. For inquiries, please contact info@arexbio.com or your local distributor.

*Clone Number, Reactivity, Source/Host and Clonality can be found in the product name and Key Features section above.

DATASHEET**ME1 Rabbit Polyclonal Antibody**

CAT. NO. APA14332

DATA

Western blot analysis of ME1 expression in MCF7 (A), mouse heart (B), mouse brain (C) whole cell lysates. (Predicted band size: 55; 64 kD; Observed band size: 64 kD)

STORAGE

Store at 4°C short term. For long term storage, store at -20°C, avoiding freeze/thaw cycles.

NOTE

For Research Use Only. Not for diagnostic, therapeutics, prophylactic or in vivo use.