

DATASHEET

DRG1 Rabbit Polyclonal Antibody

CAT. NO. APA14335

KEY FEATURES

Target	DRG1	Source / Host	Rabbit
Reactivity	Human, Mouse, Rat	Clonality	Polyclonal
Applications	WB	Conjugation	Unconjugated
Form / Buffer	Liquid in 0.42% Potassium phosphate, 0.87% Sodium chloride, pH 7.3, 30% glycerol, and 0.01% sodium azide.		Storage at -20°C

BACKGROUND

Catalyzes the conversion of GTP to GDP through hydrolysis of the gamma-phosphate bond in GTP . Appears to have an intrinsic GTPase activity that is stimulated by ZC3H15/DFRP1 binding likely by increasing the affinity for the potassium ions . When hydroxylated at C-3 of 'Lys-22' by JMJD7, may bind to RNA and play a role in translation . Binds to microtubules and promotes microtubule polymerization and stability that are required for mitotic spindle assembly during prophase to anaphase transition. GTPase activity is not necessary for these microtubule-related functions .

APPLICATION

To ensure optimal assay performance, AREX recommends conducting reagent titration tailored to each testing system for optimal detection results.

WB	1:500 - 1:2000
----	----------------

*Results are sample-specific. Please refer to your local assay conditions and test parameters for reference.

PRODUCT OVERVIEW

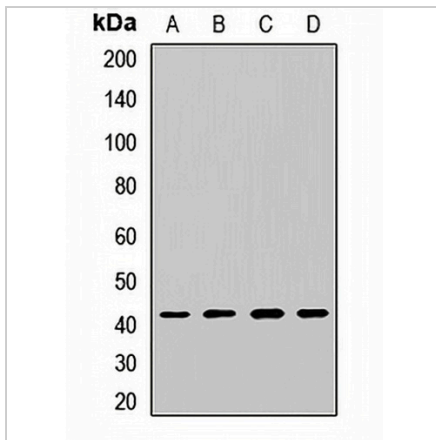
Description	Rabbit polyclonal antibody to DRG1
Specificity	Recognizes endogenous levels of DRG1 protein.
Antibody Type	Primary antibody
Immunogen	Recombinant fusion protein of human DRG1
Purification	The antibody was purified by immunogen affinity chromatography.
Molecular Weight	Predicted: 40 kD; Observed: 41 kD
Form/Buffer	Liquid in 0.42% Potassium phosphate, 0.87% Sodium chloride, pH 7.3, 30% glycerol, and 0.01% sodium azide.
Alternative Names	NEDD3; Developmentally-regulated GTP-binding protein 1; DRG-1; Neural precursor cell expressed developmentally down-regulated protein 3; NEDD-3
Gene Symbol	DRG1
Entrez Gene	4733(Human); 13494(Mouse)
SwissProt	Q9Y295(Human); P32233(Mouse)

*AREX continuously optimizes our products. Webpage content may not reflect the latest updates. For inquiries, please contact info@arexbio.com or your local distributor.

*Clone Number, Reactivity, Source/Host and Clonality can be found in the product name and Key Features section above.

DATASHEET**DRG1 Rabbit Polyclonal Antibody**

CAT. NO. APA14335

DATA

Western blot analysis of DRG1 expression in HepG2 (A), A549 (B), mouse kidney (C), rat liver (D) whole cell lysates. (Predicted band size: 40 kD; Observed band size: 41 kD)

STORAGE

Store at 4°C short term. For long term storage, store at -20°C, avoiding freeze/thaw cycles.

NOTE

For Research Use Only. Not for diagnostic, therapeutics, prophylactic or in vivo use.