

DATASHEET
PP1 gamma Rabbit Polyclonal Antibody
CAT. NO. APA14340
KEY FEATURES

| | | | |
|---------------|---|---------------|---------------------|
| Target | PP1 gamma | Source / Host | Rabbit |
| Reactivity | Human, Mouse, Rat | Clonality | Polyclonal |
| Applications | WB | Conjugation | Unconjugated |
| Form / Buffer | Liquid in 0.42% Potassium phosphate, 0.87% Sodium chloride, pH 7.3, 30% glycerol, and 0.01% sodium azide. | | Storage at -20°C |

BACKGROUND

Protein phosphatase that associates with over 200 regulatory proteins to form highly specific holoenzymes which dephosphorylate hundreds of biological targets. Protein phosphatase 1 (PP1) is essential for cell division, and participates in the regulation of glycogen metabolism, muscle contractility and protein synthesis. Dephosphorylates RPS6KB1. Involved in regulation of ionic conductances and long-term synaptic plasticity. May play an important role in dephosphorylating substrates such as the postsynaptic density-associated Ca(2+)/calmodulin dependent protein kinase II. Component of the PTW/PP1 phosphatase complex, which plays a role in the control of chromatin structure and cell cycle progression during the transition from mitosis into interphase.

APPLICATION

To ensure optimal assay performance, AREX recommends conducting reagent titration tailored to each testing system for optimal detection results.

| | |
|----|----------------|
| WB | 1:500 - 1:1000 |
|----|----------------|

*Results are sample-specific. Please refer to your local assay conditions and test parameters for reference.

PRODUCT OVERVIEW

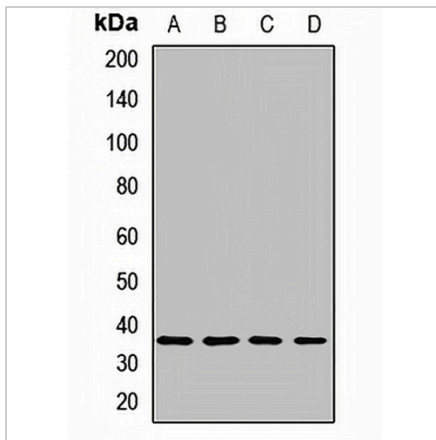
| | |
|-------------------|---|
| Description | Rabbit polyclonal antibody to PP1 gamma |
| Specificity | Recognizes endogenous levels of PP1 gamma protein. |
| Antibody Type | Primary antibody |
| Immunogen | Recombinant fusion protein of human PP1 gamma |
| Purification | The antibody was purified by immunogen affinity chromatography. |
| Molecular Weight | Predicted: 36; Observed: 38 kD |
| Form/Buffer | Liquid in 0.42% Potassium phosphate, 0.87% Sodium chloride, pH 7.3, 30% glycerol, and 0.01% sodium azide. |
| Alternative Names | Serine/threonine-protein phosphatase PP1-gamma catalytic subunit; PP-1G; Protein phosphatase 1C catalytic subunit |
| Gene Symbol | PPP1CC |
| Entrez Gene | 5501(Human); 19047; 434233(Mouse); 24669(Rat) |
| SwissProt | P36873(Human); P63087(Mouse); P63088(Rat) |

*AREX continuously optimizes our products. Webpage content may not reflect the latest updates. For inquiries, please contact info@arexbio.com or your local distributor.

*Clone Number, Reactivity, Source/Host and Clonality can be found in the product name and Key Features section above.

DATASHEET**PP1 gamma Rabbit Polyclonal Antibody**

CAT. NO. APA14340

DATA

Western blot analysis of PP1 gamma expression in HEK293T (A), HL60 (B), mouse brain (C), rat brain (D) whole cell lysates. (Predicted band size: 36; 38 kD; Observed band size: 38 kD)

STORAGE

Store at 4°C short term. For long term storage, store at -20°C, avoiding freeze/thaw cycles.

NOTE

For Research Use Only. Not for diagnostic, therapeutics, prophylactic or in vivo use.