

DATASHEET

RGS16 Rabbit Polyclonal Antibody

CAT. NO. APA14343

KEY FEATURES

Target	RGS16	Source / Host	Rabbit
Reactivity	Human, Mouse	Clonality	Polyclonal
Applications	WB, IHC	Conjugation	Unconjugated
Form / Buffer	Liquid in 0.42% Potassium phosphate, 0.87% Sodium chloride, pH 7.3, 30% glycerol, and 0.01% sodium azide.		Storage at-20°C

BACKGROUND

Regulates G protein-coupled receptor signaling cascades. Inhibits signal transduction by increasing the GTPase activity of G protein alpha subunits, thereby driving them into their inactive GDP-bound form . Plays an important role in the phototransduction cascade by regulating the lifetime and effective concentration of activated transducin alpha. May regulate extra and intracellular mitogenic signals .

APPLICATION

To ensure optimal assay performance, AREX recommends conducting reagent titration tailored to each testing system for optimal detection results.

WB	1:500 - 1:2000
IHC	1:50 - 1:200

*Results are sample-specific. Please refer to your local assay conditions and test parameters for reference.

PRODUCT OVERVIEW

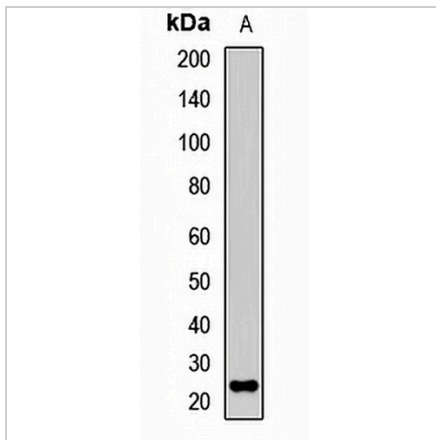
Description	Rabbit polyclonal antibody to RGS16
Specificity	Recognizes endogenous levels of RGS16 protein.
Antibody Type	Primary antibody
Immunogen	Recombinant fusion protein of human RGS16
Purification	The antibody was purified by immunogen affinity chromatography.
Molecular Weight	Predicted: 22 kD; Observed: 25 kD
Form/Buffer	Liquid in 0.42% Potassium phosphate, 0.87% Sodium chloride, pH 7.3, 30% glycerol, and 0.01% sodium azide.
Alternative Names	RGSR; Regulator of G-protein signaling 16; RGS16; A28-RGS14P; Retinal-specific RGS; RGS-r; hRGS-r; Retinally abundant regulator of G-protein signaling
Gene Symbol	RGS16
Entrez Gene	6004(Human); 19734(Mouse)
SwissProt	O15492(Human); P97428(Mouse); P56700(Rat)

*AREX continuously optimizes our products. Webpage content may not reflect the latest updates. For inquiries, please contact info@arexbio.com or your local distributor.

*Clone Number, Reactivity, Source/Host and Clonality can be found in the product name and Key Features section above.

DATASHEET**RGS16 Rabbit Polyclonal Antibody**

CAT. NO. APA14343

DATA

Western blot analysis of RGS16 expression in mouse lung (A) whole cell lysates.
(Predicted band size: 22 kD; Observed band size: 25 kD)

STORAGE

Store at 4°C short term. For long term storage, store at -20°C, avoiding freeze/thaw cycles.

NOTE

For Research Use Only. Not for diagnostic, therapeutics, prophylactic or in vivo use.