

DATASHEET

RNH1 Rabbit Polyclonal Antibody

CAT. NO. APA14344

KEY FEATURES

Target	RNH1	Source / Host	Rabbit
Reactivity	Human, Mouse, Rat	Clonality	Polyclonal
Applications	WB, IHC, IF/ICC	Conjugation	Unconjugated
Form / Buffer	Liquid in 0.42% Potassium phosphate, 0.87% Sodium chloride, pH 7.3, 30% glycerol, and 0.01% sodium azide.		Storage at-20°C

BACKGROUND

Ribonuclease inhibitor which inhibits RNASE1, RNASE2 and angiogenin (ANG) . May play a role in redox homeostasis . Required to inhibit the cytotoxic tRNA ribonuclease activity of ANG in the cytoplasm in absence of stress . Relocates to the nucleus in response to stress, relieving inhibition of ANG in the cytoplasm, and inhibiting the angiogenic activity of ANG in the nucleus .

APPLICATION

To ensure optimal assay performance, AREX recommends conducting reagent titration tailored to each testing system for optimal detection results.

WB	1:500 - 1:1000
IHC	1:50 - 1:200
IF/ICC	1:50 - 1:200

*Results are sample-specific. Please refer to your local assay conditions and test parameters for reference.

PRODUCT OVERVIEW

Description	Rabbit polyclonal antibody to RNH1
Specificity	Recognizes endogenous levels of RNH1 protein.
Antibody Type	Primary antibody
Immunogen	Recombinant fusion protein of human RNH1
Purification	The antibody was purified by immunogen affinity chromatography.
Molecular Weight	Predicted: 49 kD; Observed: 43 kD
Form/Buffer	Liquid in 0.42% Potassium phosphate, 0.87% Sodium chloride, pH 7.3, 30% glycerol, and 0.01% sodium azide.
Alternative Names	PRI; RNH; Ribonuclease inhibitor; Placental ribonuclease inhibitor; Placental RNase inhibitor; Ribonuclease/angiogenin inhibitor 1; RAI
Gene Symbol	RNH1
Entrez Gene	6050(Human); 107702(Mouse); 100360501(Rat)
SwissProt	P13489(Human); Q91VI7(Mouse); P29315(Rat)

*AREX continuously optimizes our products. Webpage content may not reflect the latest updates. For inquiries, please contact info@arexbio.com or your local distributor.

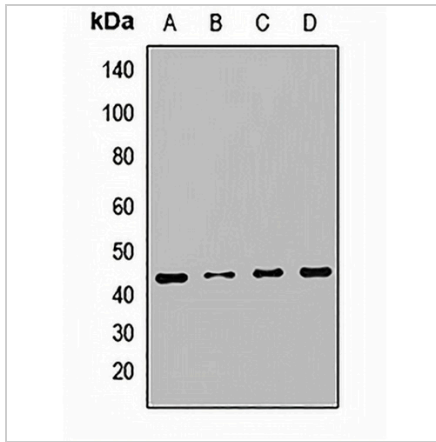
*Clone Number, Reactivity, Source/Host and Clonality can be found in the product name and Key Features section above.

DATASHEET

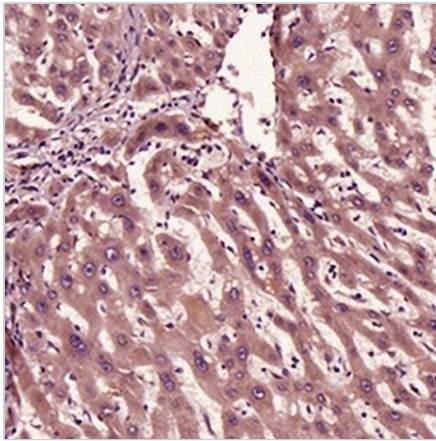
RNH1 Rabbit Polyclonal Antibody

CAT. NO. APA14344

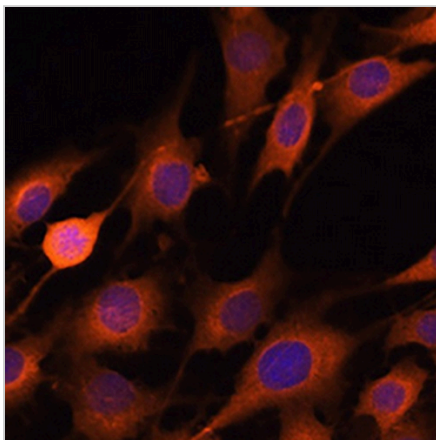
DATA



Western blot analysis of RNH1 expression in HT29 (A), HeLa (B), mouse liver (C), rat brain (D) whole cell lysates. (Predicted band size: 49 kD; Observed band size: 43 kD)



Immunohistochemical analysis of RNH1 staining in human liver formalin fixed paraffin embedded tissue section. The section was pre-treated using heat mediated antigen retrieval with sodium citrate buffer (pH 6.0). The section was then incubated with the antibody at room temperature and detected using an HRP conjugated compact polymer system. DAB was used as the chromogen. The section was then counterstained with haematoxylin and mounted with DPX.



Immunofluorescent analysis of RNH1 staining in C6 cells. Formalin-fixed cells were permeabilized with 0.1% Triton X-100 in TBS for 5-10 minutes and blocked with 3% BSA-PBS for 30 minutes at room temperature. Cells were probed with the primary antibody in 3% BSA-PBS and incubated overnight at 4 °C in a humidified chamber. Cells were washed with PBST and incubated with a AREX® Fluor 594-conjugated secondary antibody (red) in PBS at room temperature in the dark. DAPI was used to stain the cell nuclei (blue).

STORAGE

Store at 4°C short term. For long term storage, store at -20°C, avoiding freeze/thaw cycles.

NOTE

For Research Use Only. Not for diagnostic, therapeutics, prophylactic or in vivo use.