

DATASHEET

SH3GL3 Rabbit Polyclonal Antibody

CAT. NO. APA14348

KEY FEATURES

| | | | |
|---------------|---|---------------|---------------------|
| Target | SH3GL3 | Source / Host | Rabbit |
| Reactivity | Human, Mouse, Rat | Clonality | Polyclonal |
| Applications | WB, IHC | Conjugation | Unconjugated |
| Form / Buffer | Liquid in 0.42% Potassium phosphate, 0.87% Sodium chloride, pH 7.3, 30% glycerol, and 0.01% sodium azide. | | Storage at -20°C |

BACKGROUND

Implicated in endocytosis. May recruit other proteins to membranes with high curvature .

APPLICATION

To ensure optimal assay performance, AREX recommends conducting reagent titration tailored to each testing system for optimal detection results.

| | |
|-----|----------------|
| WB | 1:500 - 1:2000 |
| IHC | 1:50 - 1:200 |

*Results are sample-specific. Please refer to your local assay conditions and test parameters for reference.

PRODUCT OVERVIEW

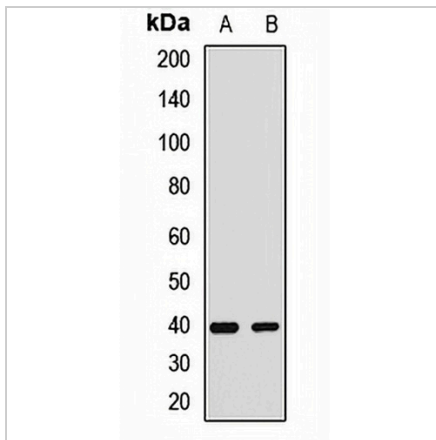
| | |
|-------------------|--|
| Description | Rabbit polyclonal antibody to SH3GL3 |
| Specificity | Recognizes endogenous levels of SH3GL3 protein. |
| Antibody Type | Primary antibody |
| Immunogen | Recombinant fusion protein of human SH3GL3 |
| Purification | The antibody was purified by immunogen affinity chromatography. |
| Molecular Weight | Predicted: 31; Observed: 39 kD |
| Form/Buffer | Liquid in 0.42% Potassium phosphate, 0.87% Sodium chloride, pH 7.3, 30% glycerol, and 0.01% sodium azide. |
| Alternative Names | CNSA3; SH3D2C; Endophilin-A3; EEN-B2; Endophilin-3; SH3 domain protein 2C; SH3 domain-containing GRB2-like protein 3 |
| Gene Symbol | SH3GL3 |
| Entrez Gene | 6457(Human); 20408(Mouse); 81921(Rat) |
| SwissProt | Q99963(Human); Q62421(Mouse); O35180(Rat) |

*AREX continuously optimizes our products. Webpage content may not reflect the latest updates. For inquiries, please contact info@arexbio.com or your local distributor.

*Clone Number, Reactivity, Source/Host and Clonality can be found in the product name and Key Features section above.

DATASHEET**SH3GL3 Rabbit Polyclonal Antibody**

CAT. NO. APA14348

DATA

Western blot analysis of SH3GL3 expression in mouse liver (A), rat brain (B) whole cell lysates. (Predicted band size: 31; 38; 39; 40 kD; Observed band size: 39 kD)

STORAGE

Store at 4°C short term. For long term storage, store at -20°C, avoiding freeze/thaw cycles.

NOTE

For Research Use Only. Not for diagnostic, therapeutics, prophylactic or in vivo use.