

DATASHEET

PIT1 Rabbit Polyclonal Antibody

CAT. NO. APA14349

KEY FEATURES

Target	PIT1	Source / Host	Rabbit
Reactivity	Human, Mouse, Rat	Clonality	Polyclonal
Applications	WB, IF/ICC	Conjugation	Unconjugated
Form / Buffer	Liquid in 0.42% Potassium phosphate, 0.87% Sodium chloride, pH 7.3, 30% glycerol, and 0.01% sodium azide.		Storage at-20°C

BACKGROUND

Sodium-phosphate symporter which preferentially transports the monovalent form of phosphate with a stoichiometry of two sodium ions per phosphate ion . May play a role in extracellular matrix and cartilage calcification as well as in vascular calcification . Essential for cell proliferation but this function is independent of its phosphate transporter activity .

APPLICATION

To ensure optimal assay performance, AREX recommends conducting reagent titration tailored to each testing system for optimal detection results.

WB	1:500 - 1:2000
IF/ICC	1:50 - 1:200

*Results are sample-specific. Please refer to your local assay conditions and test parameters for reference.

PRODUCT OVERVIEW

Description	Rabbit polyclonal antibody to PIT1
Specificity	Recognizes endogenous levels of PIT1 protein.
Antibody Type	Primary antibody
Immunogen	Recombinant fusion protein of human PIT1
Purification	The antibody was purified by immunogen affinity chromatography.
Molecular Weight	Predicted: 73 kD; Observed: 73 kD
Form/Buffer	Liquid in 0.42% Potassium phosphate, 0.87% Sodium chloride, pH 7.3, 30% glycerol, and 0.01% sodium azide.
Alternative Names	GLVR1; PIT1; Sodium-dependent phosphate transporter 1; Gibbon ape leukemia virus receptor 1; GLVR-1; Leukemia virus receptor 1 homolog; Phosphate transporter 1; PiT-1; Solute carrier family 20 member 1
Gene Symbol	SLC20A1
Entrez Gene	6574(Human); 20515(Mouse); 81826(Rat)
SwissProt	Q8WUM9(Human); Q61609(Mouse); Q9JJP0(Rat)

*AREX continuously optimizes our products. Webpage content may not reflect the latest updates. For inquiries, please contact info@arex.bio or your local distributor.

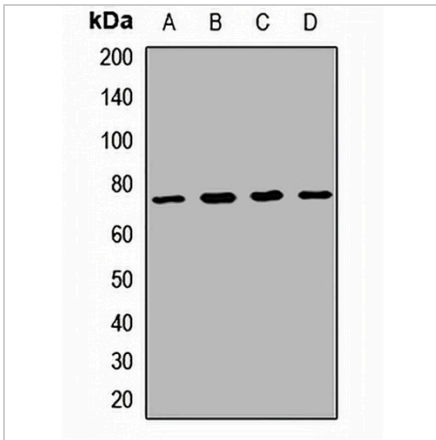
*Clone Number, Reactivity, Source/Host and Clonality can be found in the product name and Key Features section above.

DATASHEET

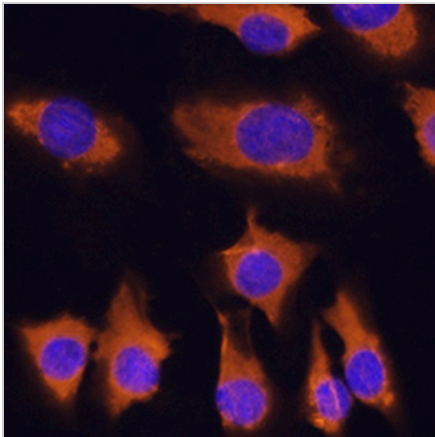
PIT1 Rabbit Polyclonal Antibody

CAT. NO. APA14349

DATA



Western blot analysis of PIT1 expression in A431 (A), HeLa (B), mouse liver (C), rat brain (D) whole cell lysates. (Predicted band size: 73 kD; Observed band size: 73 kD)



Immunofluorescent analysis of PIT1 staining in C6 cells. Formalin-fixed cells were permeabilized with 0.1% Triton X-100 in TBS for 5-10 minutes and blocked with 3% BSA-PBS for 30 minutes at room temperature. Cells were probed with the primary antibody in 3% BSA-PBS and incubated overnight at 4 °C in a humidified chamber. Cells were washed with PBST and incubated with a AREX® Fluor 594-conjugated secondary antibody (red) in PBS at room temperature in the dark. DAPI was used to stain the cell nuclei (blue).

STORAGE

Store at 4°C short term. For long term storage, store at -20°C, avoiding freeze/thaw cycles.

NOTE

For Research Use Only. Not for diagnostic, therapeutics, prophylactic or in vivo use.