

**DATASHEET**

**TCF12 Rabbit Polyclonal Antibody**

CAT. NO. APA14350

**KEY FEATURES**

Target	TCF12	Source / Host	Rabbit
Reactivity	Human, Mouse, Rat	Clonality	Polyclonal
Applications	WB	Conjugation	Unconjugated
Form / Buffer	Liquid in 0.42% Potassium phosphate, 0.87% Sodium chloride, pH 7.3, 30% glycerol, and 0.01% sodium azide.		Storage at-20°C

**BACKGROUND**

Transcriptional regulator. Involved in the initiation of neuronal differentiation. Activates transcription by binding to the E box (5'-CANNTG-3'). May be involved in the functional network that regulates the development of the GnRH axis . May be involved in the functional network that regulates the development of the GnRH axis .

**APPLICATION**

To ensure optimal assay performance, AREX recommends conducting reagent titration tailored to each testing system for optimal detection results.

WB	1:500 - 1:2000
----	----------------

\*Results are sample-specific. Please refer to your local assay conditions and test parameters for reference.

**PRODUCT OVERVIEW**

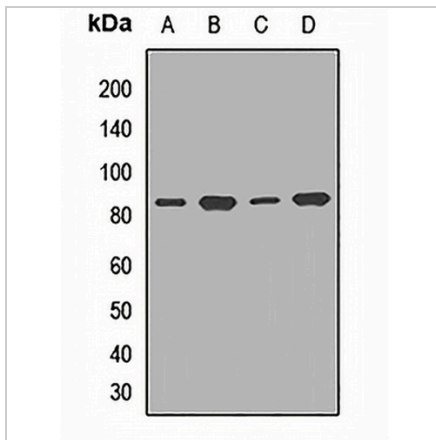
Description	Rabbit polyclonal antibody to TCF12
Specificity	Recognizes endogenous levels of TCF12 protein.
Antibody Type	Primary antibody
Immunogen	Recombinant fusion protein of human TCF12
Purification	The antibody was purified by immunogen affinity chromatography.
Molecular Weight	Predicted: 48; Observed: 85 kD
Form/Buffer	Liquid in 0.42% Potassium phosphate, 0.87% Sodium chloride, pH 7.3, 30% glycerol, and 0.01% sodium azide.
Alternative Names	BHLHB20; HEB; HTF4; Transcription factor 12; TCF-12; Class B basic helix-loop-helix protein 20; bHLHb20; DNA-binding protein HTF4; E-box-binding protein; Transcription factor HTF-4
Gene Symbol	TCF12
Entrez Gene	6938(Human); 21406(Mouse); 25720(Rat)
SwissProt	Q99081(Human); Q61286(Mouse); P51514(Rat)

\*AREX continuously optimizes our products. Webpage content may not reflect the latest updates. For inquiries, please contact [info@arexbio.com](mailto:info@arexbio.com) or your local distributor.

\*Clone Number, Reactivity, Source/Host and Clonality can be found in the product name and Key Features section above.

**DATASHEET****TCF12 Rabbit Polyclonal Antibody**

CAT. NO. APA14350

**DATA**

Western blot analysis of TCF12 expression in SKOV3 (A), A549 (B), mouse brain (C), rat testis (D) whole cell lysates. (Predicted band size: 48; 55; 72; 75 kD; Observed band size: 85 kD)

**STORAGE**

Store at 4°C short term. For long term storage, store at -20°C, avoiding freeze/thaw cycles.

**NOTE**

For Research Use Only. Not for diagnostic, therapeutics, prophylactic or in vivo use.