

DATASHEET

APPBP1 Rabbit Polyclonal Antibody

CAT. NO. APA14358

KEY FEATURES

Target	APPBP1	Source / Host	Rabbit
Reactivity	Human, Mouse, Rat	Clonality	Polyclonal
Applications	WB	Conjugation	Unconjugated
Form / Buffer	Liquid in 0.42% Potassium phosphate, 0.87% Sodium chloride, pH 7.3, 30% glycerol, and 0.01% sodium azide.		Storage at -20°C

BACKGROUND

Regulatory subunit of the dimeric UBA3-NAE1 E1 enzyme. E1 activates NEDD8 by first adenylating its C-terminal glycine residue with ATP, thereafter linking this residue to the side chain of the catalytic cysteine, yielding a NEDD8-UBA3 thioester and free AMP. E1 finally transfers NEDD8 to the catalytic cysteine of UBE2M. Necessary for cell cycle progression through the S-M checkpoint. Overexpression of NAE1 causes apoptosis through deregulation of NEDD8 conjugation. The covalent attachment of NEDD8 to target proteins is known as 'neddylation' and the process is involved in the regulation of cell growth, viability and development.

APPLICATION

To ensure optimal assay performance, AREX recommends conducting reagent titration tailored to each testing system for optimal detection results.

WB	1:500 - 1:2000
----	----------------

*Results are sample-specific. Please refer to your local assay conditions and test parameters for reference.

PRODUCT OVERVIEW

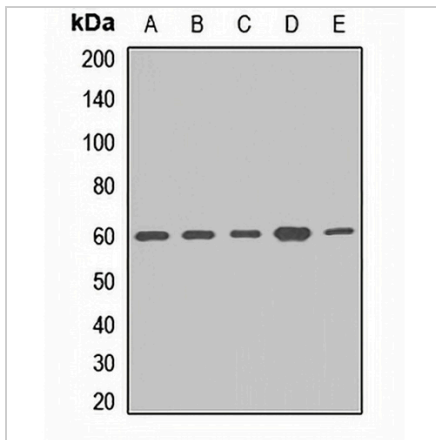
Description	Rabbit polyclonal antibody to APPBP1
Specificity	Recognizes endogenous levels of APPBP1 protein.
Antibody Type	Primary antibody
Immunogen	Recombinant fusion protein of human APPBP1
Purification	The antibody was purified by immunogen affinity chromatography.
Molecular Weight	Predicted: 50; Observed: 60 kD
Form/Buffer	Liquid in 0.42% Potassium phosphate, 0.87% Sodium chloride, pH 7.3, 30% glycerol, and 0.01% sodium azide.
Alternative Names	APPBP1; NEDD8-activating enzyme E1 regulatory subunit; Amyloid beta precursor protein-binding protein 1, 59 kDa; APP-BP1; Amyloid protein-binding protein 1; Proto-oncogene protein 1
Gene Symbol	NAE1
Entrez Gene	8883(Human); 234664(Mouse)
SwissProt	Q13564(Human); Q8VBW6(Mouse); Q9Z1A5(Rat)

*AREX continuously optimizes our products. Webpage content may not reflect the latest updates. For inquiries, please contact info@arexbio.com or your local distributor.

*Clone Number, Reactivity, Source/Host and Clonality can be found in the product name and Key Features section above.

DATASHEET**APPBP1 Rabbit Polyclonal Antibody**

CAT. NO. APA14358

DATA

Western blot analysis of APPBP1 expression in SHSY5Y (A), SW620 (B), NIH3T3 (C), mouse lung (D), rat brain (E) whole cell lysates. (Predicted band size: 50; 59; 60 kD; Observed band size: 60 kD)

STORAGE

Store at 4°C short term. For long term storage, store at -20°C, avoiding freeze/thaw cycles.

NOTE

For Research Use Only. Not for diagnostic, therapeutics, prophylactic or in vivo use.