

DATASHEET

SNAP29 Rabbit Polyclonal Antibody

CAT. NO. APA14360

KEY FEATURES

Target	SNAP29	Source / Host	Rabbit
Reactivity	Human, Mouse, Rat	Clonality	Polyclonal
Applications	WB	Conjugation	Unconjugated
Form / Buffer	Liquid in 0.42% Potassium phosphate, 0.87% Sodium chloride, pH 7.3, 30% glycerol, and 0.01% sodium azide.		Storage at -20°C

BACKGROUND

SNAREs, soluble N-ethylmaleimide-sensitive factor-attachment protein receptors, are essential proteins for fusion of cellular membranes. SNAREs localized on opposing membranes assemble to form a trans-SNARE complex, an extended, parallel four alpha-helical bundle that drives membrane fusion. SNAP29 is a SNARE involved in autophagy through the direct control of autophagosome membrane fusion with the lysosome membrane. Also plays a role in ciliogenesis by regulating membrane fusions.

APPLICATION

To ensure optimal assay performance, AREX recommends conducting reagent titration tailored to each testing system for optimal detection results.

WB	1:500 - 1:1000
----	----------------

*Results are sample-specific. Please refer to your local assay conditions and test parameters for reference.

PRODUCT OVERVIEW

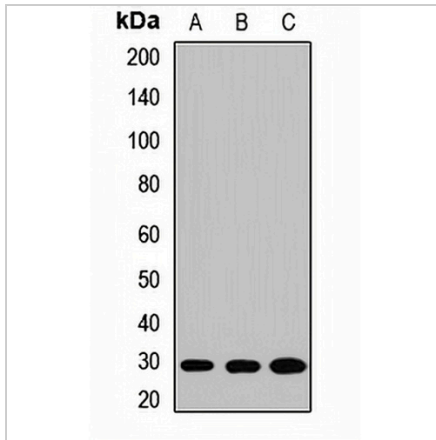
Description	Rabbit polyclonal antibody to SNAP29
Specificity	Recognizes endogenous levels of SNAP29 protein.
Antibody Type	Primary antibody
Immunogen	Recombinant fusion protein of human SNAP29
Purification	The antibody was purified by immunogen affinity chromatography.
Molecular Weight	Predicted: 28 kD; Observed: 29 kD
Form/Buffer	Liquid in 0.42% Potassium phosphate, 0.87% Sodium chloride, pH 7.3, 30% glycerol, and 0.01% sodium azide.
Alternative Names	Synaptosomal-associated protein 29; SNAP-29; Soluble 29 kDa NSF attachment protein; Vesicle-membrane fusion protein SNAP-29
Gene Symbol	SNAP29
Entrez Gene	9342(Human); 67474(Mouse)
SwissProt	O95721(Human); Q9ERB0(Mouse); Q9Z2P6(Rat)

*AREX continuously optimizes our products. Webpage content may not reflect the latest updates. For inquiries, please contact info@arexbio.com or your local distributor.

*Clone Number, Reactivity, Source/Host and Clonality can be found in the product name and Key Features section above.

DATASHEET**SNAP29 Rabbit Polyclonal Antibody**

CAT. NO. APA14360

DATA

Western blot analysis of SNAP29 expression in A549 (A), HeLa (B), HepG2 (C) whole cell lysates. (Predicted band size: 28 kD; Observed band size: 29 kD)

STORAGE

Store at 4°C short term. For long term storage, store at -20°C, avoiding freeze/thaw cycles.

NOTE

For Research Use Only. Not for diagnostic, therapeutics, prophylactic or in vivo use.