

DATASHEET

EIF4E2 Rabbit Polyclonal Antibody

CAT. NO. APA14363

KEY FEATURES

Target	EIF4E2	Source / Host	Rabbit
Reactivity	Human, Mouse	Clonality	Polyclonal
Applications	WB, IF/ICC	Conjugation	Unconjugated
Form / Buffer	Liquid in 0.42% Potassium phosphate, 0.87% Sodium chloride, pH 7.3, 30% glycerol, and 0.01% sodium azide.		Storage at -20°C

BACKGROUND

Recognizes and binds the 7-methylguanosine-containing mRNA cap during an early step in the initiation. Acts as a repressor of translation initiation. In contrast to EIF4E, it is unable to bind eIF4G (EIF4G1, EIF4G2 or EIF4G3), suggesting that it acts by competing with EIF4E and block assembly of eIF4F at the cap. In P-bodies, component of a complex that promotes miRNA-mediated translational repression. Involved in virus-induced host response by mediating miRNA MIR34A-induced translational silencing which controls IFNB1 production by a negative feedback mechanism.

APPLICATION

To ensure optimal assay performance, AREX recommends conducting reagent titration tailored to each testing system for optimal detection results.

WB	1:500 - 1:2000
IF/ICC	1:50 - 1:200

*Results are sample-specific. Please refer to your local assay conditions and test parameters for reference.

PRODUCT OVERVIEW

Description	Rabbit polyclonal antibody to EIF4E2
Specificity	Recognizes endogenous levels of EIF4E2 protein.
Antibody Type	Primary antibody
Immunogen	Recombinant fusion protein of human EIF4E2
Purification	The antibody was purified by immunogen affinity chromatography.
Molecular Weight	Predicted: 27; Observed: 28 kD
Form/Buffer	Liquid in 0.42% Potassium phosphate, 0.87% Sodium chloride, pH 7.3, 30% glycerol, and 0.01% sodium azide.
Alternative Names	EIF4EL3; Eukaryotic translation initiation factor 4E type 2; eIF-4E type 2; eIF4E type 2; Eukaryotic translation initiation factor 4E homologous protein; Eukaryotic translation initiation factor 4E-like 3; eIF4E-like protein 4E-LP; mRNA cap-binding protein 4EHP; mRNA cap-binding protein type 3
Gene Symbol	EIF4E2
Entrez Gene	9470(Human); 26987(Mouse)
SwissProt	O60573(Human); Q8BMB3(Mouse)

*AREX continuously optimizes our products. Webpage content may not reflect the latest updates. For inquiries, please contact info@arexbio.com or your local distributor.

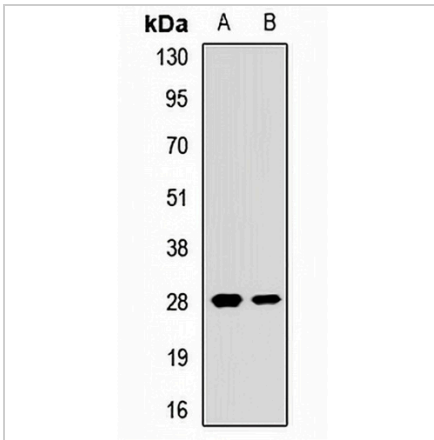
*Clone Number, Reactivity, Source/Host and Clonality can be found in the product name and Key Features section above.

DATASHEET

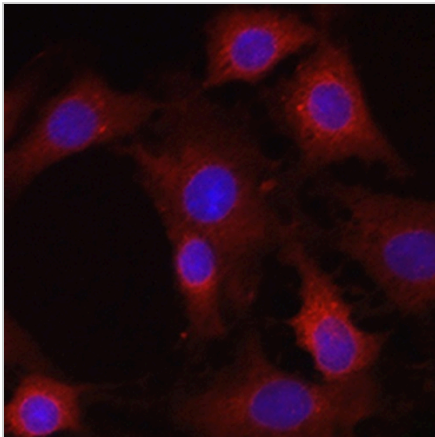
EIF4E2 Rabbit Polyclonal Antibody

CAT. NO. APA14363

DATA



Western blot analysis of EIF4E2 expression in HL60 (A), mouse kidney (B) whole cell lysates. (Predicted band size: 27; 28 kD; Observed band size: 28 kD)



Immunofluorescent analysis of EIF4E2 staining in C6 cells. Formalin-fixed cells were permeabilized with 0.1% Triton X-100 in TBS for 5-10 minutes and blocked with 3% BSA-PBS for 30 minutes at room temperature. Cells were probed with the primary antibody in 3% BSA-PBS and incubated overnight at 4 °C in a humidified chamber. Cells were washed with PBST and incubated with a AREX® Fluor 594-conjugated secondary antibody (red) in PBS at room temperature in the dark. DAPI was used to stain the cell nuclei (blue).

STORAGE

Store at 4°C short term. For long term storage, store at -20°C, avoiding freeze/thaw cycles.

NOTE

For Research Use Only. Not for diagnostic, therapeutics, prophylactic or in vivo use.