

DATASHEET

PMPCB Rabbit Polyclonal Antibody

CAT. NO. APA14364

KEY FEATURES

Target	PMPCB	Source / Host	Rabbit
Reactivity	Human, Mouse, Rat	Clonality	Polyclonal
Applications	WB	Conjugation	Unconjugated
Form / Buffer	Liquid in 0.42% Potassium phosphate, 0.87% Sodium chloride, pH 7.3, 30% glycerol, and 0.01% sodium azide.		Storage at -20°C

BACKGROUND

Catalytic subunit of the essential mitochondrial processing protease (MPP), which cleaves the mitochondrial sequence off newly imported precursors proteins (Probable) , which cleaves the mitochondrial sequence off newly imported precursors proteins (Probable) . Preferentially, cleaves after an arginine at position P2 . Required for PINK1 turnover by coupling PINK1 mitochondrial import and cleavage, which results in subsequent PINK1 proteolysis .

APPLICATION

To ensure optimal assay performance, AREX recommends conducting reagent titration tailored to each testing system for optimal detection results.

WB	1:500 - 1:1000
----	----------------

*Results are sample-specific. Please refer to your local assay conditions and test parameters for reference.

PRODUCT OVERVIEW

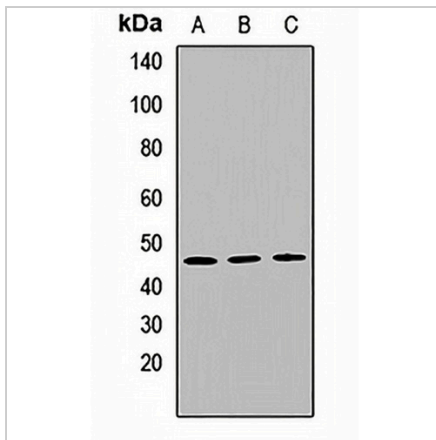
Description	Rabbit polyclonal antibody to PMPCB
Specificity	Recognizes endogenous levels of PMPCB protein.
Antibody Type	Primary antibody
Immunogen	Recombinant fusion protein of human PMPCB
Purification	The antibody was purified by immunogen affinity chromatography.
Molecular Weight	Predicted: 54 kD; Observed: 45 kD
Form/Buffer	Liquid in 0.42% Potassium phosphate, 0.87% Sodium chloride, pH 7.3, 30% glycerol, and 0.01% sodium azide.
Alternative Names	MPPB; Mitochondrial-processing peptidase subunit beta; Beta-MPP; P-52
Gene Symbol	PMPCB
Entrez Gene	9512(Human); 73078(Mouse); 64198(Rat)
SwissProt	O75439(Human); Q9CXT8(Mouse); Q03346(Rat)

*AREX continuously optimizes our products. Webpage content may not reflect the latest updates. For inquiries, please contact info@arexbio.com or your local distributor.

*Clone Number, Reactivity, Source/Host and Clonality can be found in the product name and Key Features section above.

DATASHEET**PMPCB Rabbit Polyclonal Antibody**

CAT. NO. APA14364

DATA

Western blot analysis of PMPCB expression in MCF7 (A), mouse liver (B), mouse heart (C) whole cell lysates. (Predicted band size: 54 kD; Observed band size: 45 kD)

STORAGE

Store at 4°C short term. For long term storage, store at -20°C, avoiding freeze/thaw cycles.

NOTE

For Research Use Only. Not for diagnostic, therapeutics, prophylactic or in vivo use.