

DATASHEET

GS28 Rabbit Polyclonal Antibody

CAT. NO. APA14365

KEY FEATURES

Target	GS28	Source / Host	Rabbit
Reactivity	Human, Mouse, Rat	Clonality	Polyclonal
Applications	WB	Conjugation	Unconjugated
Form / Buffer	Liquid in 0.42% Potassium phosphate, 0.87% Sodium chloride, pH 7.3, 30% glycerol, and 0.01% sodium azide.		Storage at -20°C

BACKGROUND

Involved in transport from the ER to the Golgi apparatus as well as in intra-Golgi transport. It belongs to a super-family of proteins called t-SNAREs or soluble NSF (N-ethylmaleimide-sensitive factor) attachment protein receptor. May play a protective role against hydrogen peroxide induced cytotoxicity under glutathione depleted conditions in neuronal cells by regulating the intracellular ROS levels via inhibition of p38 MAPK (MAPK11, MAPK12, MAPK13 and MAPK14). Participates in docking and fusion stage of ER to cis-Golgi transport. Plays an important physiological role in VLDL-transport vesicle-Golgi fusion and thus in VLDL delivery to the hepatic cis-Golgi.

APPLICATION

To ensure optimal assay performance, AREX recommends conducting reagent titration tailored to each testing system for optimal detection results.

WB	1:500 - 1:1000
----	----------------

*Results are sample-specific. Please refer to your local assay conditions and test parameters for reference.

PRODUCT OVERVIEW

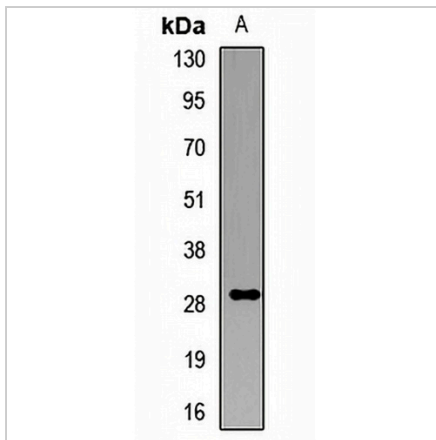
Description	Rabbit polyclonal antibody to GS28
Specificity	Recognizes endogenous levels of GS28 protein.
Antibody Type	Primary antibody
Immunogen	Recombinant fusion protein of human GS28
Purification	The antibody was purified by immunogen affinity chromatography.
Molecular Weight	Predicted: 21; Observed: 29 kD
Form/Buffer	Liquid in 0.42% Potassium phosphate, 0.87% Sodium chloride, pH 7.3, 30% glycerol, and 0.01% sodium azide.
Alternative Names	GS28; Golgi SNAP receptor complex member 1; 28 kDa Golgi SNARE protein; 28 kDa cis-Golgi SNARE p28; GOS-28
Gene Symbol	GOSR1
Entrez Gene	9527(Human); 53334(Mouse); 94189(Rat)
SwissProt	O95249(Human); O88630(Mouse); Q62931(Rat)

*AREX continuously optimizes our products. Webpage content may not reflect the latest updates. For inquiries, please contact info@arexbio.com or your local distributor.

*Clone Number, Reactivity, Source/Host and Clonality can be found in the product name and Key Features section above.

DATASHEET**GS28 Rabbit Polyclonal Antibody**

CAT. NO. APA14365

DATA

Western blot analysis of GS28 expression in mouse testis (A) whole cell lysates. (Predicted band size: 21; 28 kD; Observed band size: 29 kD)

STORAGE

Store at 4°C short term. For long term storage, store at -20°C, avoiding freeze/thaw cycles.

NOTE

For Research Use Only. Not for diagnostic, therapeutics, prophylactic or in vivo use.