

DATASHEET

GS27 Rabbit Polyclonal Antibody

CAT. NO. APA14366

KEY FEATURES

Target	GS27	Source / Host	Rabbit
Reactivity	Human, Mouse, Rat	Clonality	Polyclonal
Applications	WB	Conjugation	Unconjugated
Form / Buffer	Liquid in 0.42% Potassium phosphate, 0.87% Sodium chloride, pH 7.3, 30% glycerol, and 0.01% sodium azide.		Storage at -20°C

BACKGROUND

Involved in transport of proteins from the cis/medial-Golgi to the trans-Golgi network.

APPLICATION

To ensure optimal assay performance, AREX recommends conducting reagent titration tailored to each testing system for optimal detection results.

WB	1:500 - 1:2000
----	----------------

*Results are sample-specific. Please refer to your local assay conditions and test parameters for reference.

PRODUCT OVERVIEW

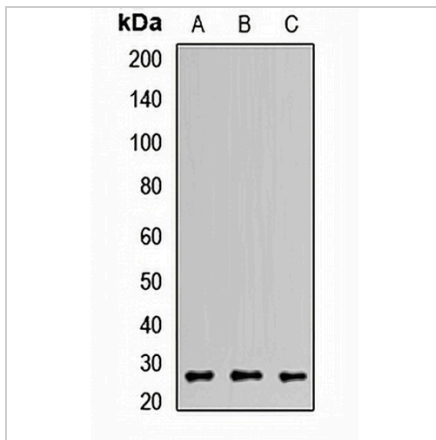
Description	Rabbit polyclonal antibody to GS27
Specificity	Recognizes endogenous levels of GS27 protein.
Antibody Type	Primary antibody
Immunogen	Recombinant fusion protein of human GS27
Purification	The antibody was purified by immunogen affinity chromatography.
Molecular Weight	Predicted: 22; Observed: 24 kD
Form/Buffer	Liquid in 0.42% Potassium phosphate, 0.87% Sodium chloride, pH 7.3, 30% glycerol, and 0.01% sodium azide.
Alternative Names	GS27; Golgi SNAP receptor complex member 2; 27 kDa Golgi SNARE protein; Membrin
Gene Symbol	GOSR2
Entrez Gene	9570(Human); 56494(Mouse); 64154(Rat)
SwissProt	O14653(Human); O35166(Mouse); O35165(Rat)

*AREX continuously optimizes our products. Webpage content may not reflect the latest updates. For inquiries, please contact info@arexbio.com or your local distributor.

*Clone Number, Reactivity, Source/Host and Clonality can be found in the product name and Key Features section above.

DATASHEET**GS27 Rabbit Polyclonal Antibody**

CAT. NO. APA14366

DATA

Western blot analysis of GS27 expression in MCF7 (A), HepG2 (B), K562 (C) whole cell lysates. (Predicted band size: 22; 24 kD; Observed band size: 24 kD)

STORAGE

Store at 4°C short term. For long term storage, store at -20°C, avoiding freeze/thaw cycles.

NOTE

For Research Use Only. Not for diagnostic, therapeutics, prophylactic or in vivo use.