

DATASHEET

SAF-B2 Rabbit Polyclonal Antibody

CAT. NO. APA14367

KEY FEATURES

Target	SAF-B2	Source / Host	Rabbit
Reactivity	Human, Mouse	Clonality	Polyclonal
Applications	WB	Conjugation	Unconjugated
Form / Buffer	Liquid in 0.42% Potassium phosphate, 0.87% Sodium chloride, pH 7.3, 30% glycerol, and 0.01% sodium azide.		Storage at -20°C

BACKGROUND

Binds to scaffold/matrix attachment region (S/MAR) DNA. Can function as an estrogen receptor corepressor and can also inhibit cell proliferation.

APPLICATION

To ensure optimal assay performance, AREX recommends conducting reagent titration tailored to each testing system for optimal detection results.

WB	1:500 - 1:1000
----	----------------

*Results are sample-specific. Please refer to your local assay conditions and test parameters for reference.

PRODUCT OVERVIEW

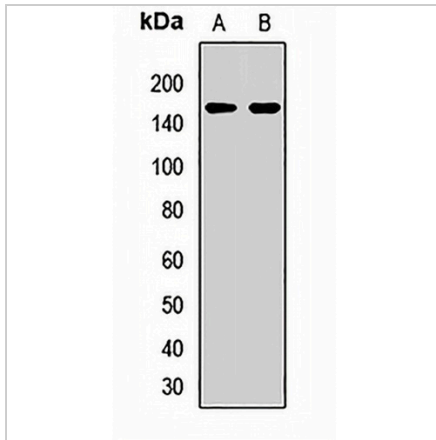
Description	Rabbit polyclonal antibody to SAF-B2
Specificity	Recognizes endogenous levels of SAF-B2 protein.
Antibody Type	Primary antibody
Immunogen	Recombinant fusion protein of human SAF-B2
Purification	The antibody was purified by immunogen affinity chromatography.
Molecular Weight	Predicted: 12; Observed: 160 kD
Form/Buffer	Liquid in 0.42% Potassium phosphate, 0.87% Sodium chloride, pH 7.3, 30% glycerol, and 0.01% sodium azide.
Alternative Names	KIAA0138; Scaffold attachment factor B2; SAF-B2
Gene Symbol	SAFB2
Entrez Gene	9667(Human); 224902(Mouse)
SwissProt	Q14151(Human); Q80YR5(Mouse)

*AREX continuously optimizes our products. Webpage content may not reflect the latest updates. For inquiries, please contact info@arexbio.com or your local distributor.

*Clone Number, Reactivity, Source/Host and Clonality can be found in the product name and Key Features section above.

DATASHEET**SAF-B2 Rabbit Polyclonal Antibody**

CAT. NO. APA14367

DATA

Western blot analysis of SAF-B2 expression in HeLa (A), MCF7 (B) whole cell lysates.
(Predicted band size: 12; 107 kD; Observed band size: 160 kD)

STORAGE

Store at 4°C short term. For long term storage, store at -20°C, avoiding freeze/thaw cycles.

NOTE

For Research Use Only. Not for diagnostic, therapeutics, prophylactic or in vivo use.