

## DATASHEET

# RCL1 Rabbit Polyclonal Antibody

CAT. NO. APA14375

### KEY FEATURES

Target	RCL1	Source / Host	Rabbit
Reactivity	Human, Mouse, Rat	Clonality	Polyclonal
Applications	WB	Conjugation	Unconjugated
Form / Buffer	Liquid in 0.42% Potassium phosphate, 0.87% Sodium chloride, pH 7.3, 30% glycerol, and 0.01% sodium azide.		Storage at -20°C

### BACKGROUND

As part of the small subunit (SSU) processome, it plays a role in 40S-ribosomal-subunit biogenesis in the early pre-rRNA processing steps at sites A0, A1 and A2 that are required for proper maturation of the 18S RNA . Activates BMS1 by promoting GDP/GTP exchange . Does not have cyclase activity .

### APPLICATION

To ensure optimal assay performance, AREX recommends conducting reagent titration tailored to each testing system for optimal detection results.

WB	1:500 - 1:2000
----	----------------

\*Results are sample-specific. Please refer to your local assay conditions and test parameters for reference.

### PRODUCT OVERVIEW

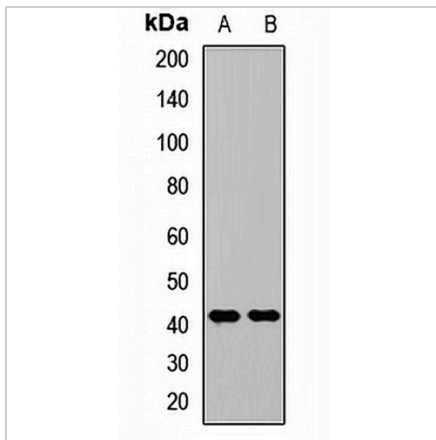
Description	Rabbit polyclonal antibody to RCL1
Specificity	Recognizes endogenous levels of RCL1 protein.
Antibody Type	Primary antibody
Immunogen	Recombinant fusion protein of human RCL1
Purification	The antibody was purified by immunogen affinity chromatography.
Molecular Weight	Predicted: 20; Observed: 41 kD
Form/Buffer	Liquid in 0.42% Potassium phosphate, 0.87% Sodium chloride, pH 7.3, 30% glycerol, and 0.01% sodium azide.
Alternative Names	RNAC; RPC2; RPCL1; RTC2; RNA 3'-terminal phosphate cyclase-like protein
Gene Symbol	RCL1
Entrez Gene	10171(Human); 59028(Mouse)
SwissProt	Q9Y2P8(Human); Q9JJT0(Mouse)

\*AREX continuously optimizes our products. Webpage content may not reflect the latest updates. For inquiries, please contact [info@arexbio.com](mailto:info@arexbio.com) or your local distributor.

\*Clone Number, Reactivity, Source/Host and Clonality can be found in the product name and Key Features section above.

**DATASHEET****RCL1 Rabbit Polyclonal Antibody**

CAT. NO. APA14375

**DATA**

Western blot analysis of RCL1 expression in mouse liver (A), rat liver (B) whole cell lysates. (Predicted band size: 20; 40 kD; Observed band size: 41 kD)

**STORAGE**

Store at 4°C short term. For long term storage, store at -20°C, avoiding freeze/thaw cycles.

**NOTE**

For Research Use Only. Not for diagnostic, therapeutics, prophylactic or in vivo use.