

DATASHEET

TOM34 Rabbit Polyclonal Antibody

CAT. NO. APA14387

KEY FEATURES

Target	TOM34	Source / Host	Rabbit
Reactivity	Human, Mouse, Rat	Clonality	Polyclonal
Applications	WB	Conjugation	Unconjugated
Form / Buffer	Liquid in 0.42% Potassium phosphate, 0.87% Sodium chloride, pH 7.3, 30% glycerol, and 0.01% sodium azide.		Storage at -20°C

BACKGROUND

Plays a role in the import of cytosolically synthesized preproteins into mitochondria. Binds the mature portion of precursor proteins. Interacts with cellular components, and possesses weak ATPase activity. May be a chaperone-like protein that helps to keep newly synthesized precursors in an unfolded import compatible state.

APPLICATION

To ensure optimal assay performance, AREX recommends conducting reagent titration tailored to each testing system for optimal detection results.

WB	1:500 - 1:1000
----	----------------

*Results are sample-specific. Please refer to your local assay conditions and test parameters for reference.

PRODUCT OVERVIEW

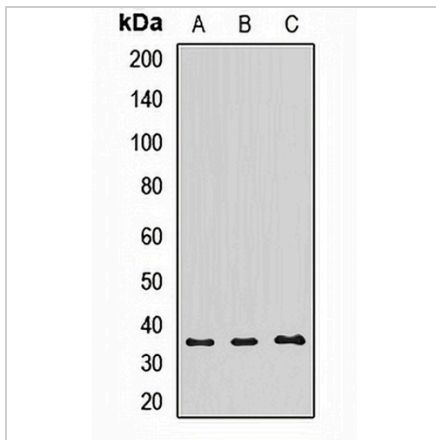
Description	Rabbit polyclonal antibody to TOM34
Specificity	Recognizes endogenous levels of TOM34 protein.
Antibody Type	Primary antibody
Immunogen	Recombinant fusion protein of human TOM34
Purification	The antibody was purified by immunogen affinity chromatography.
Molecular Weight	Predicted: 34 kD; Observed: 35 kD
Form/Buffer	Liquid in 0.42% Potassium phosphate, 0.87% Sodium chloride, pH 7.3, 30% glycerol, and 0.01% sodium azide.
Alternative Names	URCC3; Mitochondrial import receptor subunit TOM34; hTom34; Translocase of outer membrane 34 kDa subunit
Gene Symbol	TOMM34
Entrez Gene	10953(Human); 67145(Mouse); 311621(Rat)
SwissProt	Q15785(Human); Q9CYG7(Mouse); Q3KRD5(Rat)

*AREX continuously optimizes our products. Webpage content may not reflect the latest updates. For inquiries, please contact info@arexbio.com or your local distributor.

*Clone Number, Reactivity, Source/Host and Clonality can be found in the product name and Key Features section above.

DATASHEET**TOM34 Rabbit Polyclonal Antibody**

CAT. NO. APA14387

DATA

Western blot analysis of TOM34 expression in A431 (A), HeLa (B), mouse spleen (C) whole cell lysates. (Predicted band size: 34 kD; Observed band size: 35 kD)

STORAGE

Store at 4°C short term. For long term storage, store at -20°C, avoiding freeze/thaw cycles.

NOTE

For Research Use Only. Not for diagnostic, therapeutics, prophylactic or in vivo use.