

DATASHEET

NUDT21 Rabbit Polyclonal Antibody

CAT. NO. APA14389

KEY FEATURES

Target	NUDT21	Source / Host	Rabbit
Reactivity	Human, Mouse, Rat	Clonality	Polyclonal
Applications	WB, IHC	Conjugation	Unconjugated
Form / Buffer	Liquid in 0.42% Potassium phosphate, 0.87% Sodium chloride, pH 7.3, 30% glycerol, and 0.01% sodium azide.		Storage at -20°C

BACKGROUND

Component of the cleavage factor Im (CFIm) complex that functions as an activator of the pre-mRNA 3'-end cleavage and polyadenylation processing required for the maturation of pre-mRNA into functional mRNAs complex that functions as an activator of the pre-mRNA 3'-end cleavage and polyadenylation processing required for the maturation of pre-mRNA into functional mRNAs . CFIm contributes to the recruitment of multiprotein complexes on specific sequences on the pre-mRNA 3'-end, so called cleavage and polyadenylation signals (pA signals) . Most pre-mRNAs contain multiple pA signals, resulting in alternative cleavage and polyadenylation (APA) producing mRNAs with variable 3'-end formation .

APPLICATION

To ensure optimal assay performance, AREX recommends conducting reagent titration tailored to each testing system for optimal detection results.

WB	1:500 - 1:2000
IHC	1:50 - 1:200

*Results are sample-specific. Please refer to your local assay conditions and test parameters for reference.

PRODUCT OVERVIEW

Description	Rabbit polyclonal antibody to NUDT21
Specificity	Recognizes endogenous levels of NUDT21 protein.
Antibody Type	Primary antibody
Immunogen	Recombinant fusion protein of human NUDT21
Purification	The antibody was purified by immunogen affinity chromatography.
Molecular Weight	Predicted: 26 kD; Observed: 26 kD
Form/Buffer	Liquid in 0.42% Potassium phosphate, 0.87% Sodium chloride, pH 7.3, 30% glycerol, and 0.01% sodium azide.
Alternative Names	CFIM25; CPSF25; CPSF5; Cleavage and polyadenylation specificity factor subunit 5; Cleavage and polyadenylation specificity factor 25 kDa subunit; CFIm25; CPSF 25 kDa subunit; Nucleoside diphosphate-linked moiety X motif 21; Nudix motif 21; Pre-mRNA cleavage factor Im 25 kDa subunit
Gene Symbol	NUDT21
Entrez Gene	11051(Human); 68219(Mouse)
SwissProt	O43809(Human); Q9CQF3(Mouse)

*AREX continuously optimizes our products. Webpage content may not reflect the latest updates. For inquiries, please contact info@arexbio.com or your local distributor.

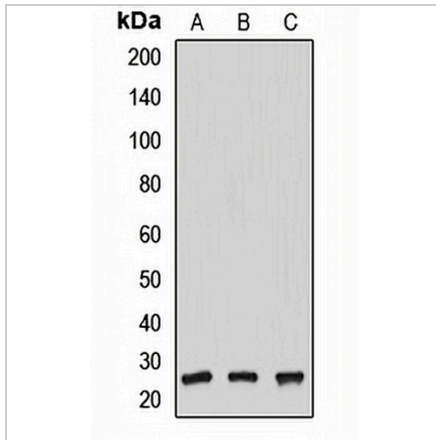
*Clone Number, Reactivity, Source/Host and Clonality can be found in the product name and Key Features section above.

DATASHEET

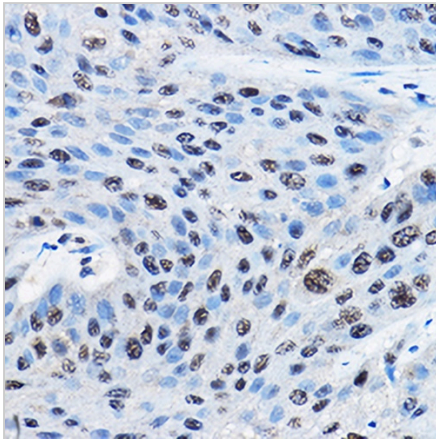
NUDT21 Rabbit Polyclonal Antibody

CAT. NO. APA14389

DATA



Western blot analysis of NUDT21 expression in SHSY5Y (A), HepG2 (B), mouse thymus (C) whole cell lysates. (Predicted band size: 26 kD; Observed band size: 26 kD)



Immunohistochemical analysis of NUDT21 staining in human esophageal cancer formalin fixed paraffin embedded tissue section. The section was pre-treated using heat mediated antigen retrieval with sodium citrate buffer (pH 6.0). The section was then incubated with the antibody at room temperature and detected using an HRP conjugated compact polymer system. DAB was used as the chromogen. The section was then counterstained with haematoxylin and mounted with DPX.

STORAGE

Store at 4°C short term. For long term storage, store at -20°C, avoiding freeze/thaw cycles.

NOTE

For Research Use Only. Not for diagnostic, therapeutics, prophylactic or in vivo use.