

## DATASHEET

# Tara Rabbit Polyclonal Antibody

CAT. NO. APA14390

### KEY FEATURES

Target	Tara	Source / Host	Rabbit
Reactivity	Human, Mouse	Clonality	Polyclonal
Applications	WB, IHC	Conjugation	Unconjugated
Form / Buffer	Liquid in 0.42% Potassium phosphate, 0.87% Sodium chloride, pH 7.3, 30% glycerol, and 0.01% sodium azide.		Storage at -20°C

### BACKGROUND

Regulates actin cytoskeletal organization, cell spreading and cell contraction by directly binding and stabilizing filamentous F-actin and prevents its depolymerization. May also serve as a linker protein to recruit proteins required for F-actin formation and turnover. Essential for correct mitotic progression.

### APPLICATION

To ensure optimal assay performance, AREX recommends conducting reagent titration tailored to each testing system for optimal detection results.

WB	1:500 - 1:2000
IHC	1:50 - 1:200

\*Results are sample-specific. Please refer to your local assay conditions and test parameters for reference.

### PRODUCT OVERVIEW

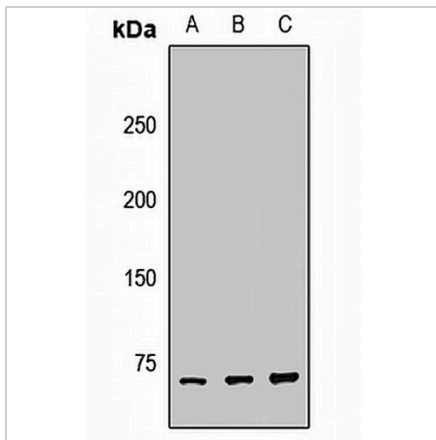
Description	Rabbit polyclonal antibody to Tara
Specificity	Recognizes endogenous levels of Tara protein.
Antibody Type	Primary antibody
Immunogen	Recombinant fusion protein of human Tara
Purification	The antibody was purified by immunogen affinity chromatography.
Molecular Weight	Predicted: 47; Observed: 70 kD
Form/Buffer	Liquid in 0.42% Potassium phosphate, 0.87% Sodium chloride, pH 7.3, 30% glycerol, and 0.01% sodium azide.
Alternative Names	KIAA1662; TARA; TRIO and F-actin-binding protein; Protein Tara; Trio-associated repeat on actin
Gene Symbol	TRIOBP
Entrez Gene	11078(Human); 110253(Mouse)
SwissProt	Q9H2D6(Human); Q99KW3(Mouse)

\*AREX continuously optimizes our products. Webpage content may not reflect the latest updates. For inquiries, please contact [info@arexbio.com](mailto:info@arexbio.com) or your local distributor.

\*Clone Number, Reactivity, Source/Host and Clonality can be found in the product name and Key Features section above.

**DATASHEET****Tara Rabbit Polyclonal Antibody**

CAT. NO. APA14390

**DATA**

Western blot analysis of Tara expression in HeLa (A), A549 (B), mouse liver (C) whole cell lysates. (Predicted band size: 47; 68; 74; 125; 243; 250; 261 kD; Observed band size: 70 kD)

**STORAGE**

Store at 4°C short term. For long term storage, store at -20°C, avoiding freeze/thaw cycles.

**NOTE**

For Research Use Only. Not for diagnostic, therapeutics, prophylactic or in vivo use.