

DATASHEET

DMC1 Rabbit Polyclonal Antibody

CAT. NO. APA14391

KEY FEATURES

Target	DMC1	Source / Host	Rabbit
Reactivity	Human, Mouse, Rat	Clonality	Polyclonal
Applications	WB	Conjugation	Unconjugated
Form / Buffer	Liquid in 0.42% Potassium phosphate, 0.87% Sodium chloride, pH 7.3, 30% glycerol, and 0.01% sodium azide.		Storage at -20°C

BACKGROUND

Participates in meiotic recombination, specifically in homologous strand assimilation, which is required for the resolution of meiotic double-strand breaks.

APPLICATION

To ensure optimal assay performance, AREX recommends conducting reagent titration tailored to each testing system for optimal detection results.

WB	1:500 - 1:2000
----	----------------

*Results are sample-specific. Please refer to your local assay conditions and test parameters for reference.

PRODUCT OVERVIEW

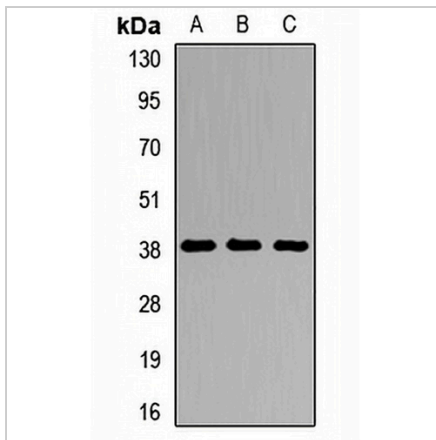
Description	Rabbit polyclonal antibody to DMC1
Specificity	Recognizes endogenous levels of DMC1 protein.
Antibody Type	Primary antibody
Immunogen	Recombinant fusion protein of human DMC1
Purification	The antibody was purified by immunogen affinity chromatography.
Molecular Weight	Predicted: 31; Observed: 38 kD
Form/Buffer	Liquid in 0.42% Potassium phosphate, 0.87% Sodium chloride, pH 7.3, 30% glycerol, and 0.01% sodium azide.
Alternative Names	DMC1H; LIM15; Meiotic recombination protein DMC1/LIM15 homolog
Gene Symbol	DMC1
Entrez Gene	11144(Human); 13404(Mouse)
SwissProt	Q14565(Human); Q61880(Mouse)

*AREX continuously optimizes our products. Webpage content may not reflect the latest updates. For inquiries, please contact info@arexbio.com or your local distributor.

*Clone Number, Reactivity, Source/Host and Clonality can be found in the product name and Key Features section above.

DATASHEET**DMC1 Rabbit Polyclonal Antibody**

CAT. NO. APA14391

DATA

Western blot analysis of DMC1 expression in HeLa (A), PC3 (B), mouse testis (C) whole cell lysates. (Predicted band size: 31; 37 kD; Observed band size: 38 kD)

STORAGE

Store at 4°C short term. For long term storage, store at -20°C, avoiding freeze/thaw cycles.

NOTE

For Research Use Only. Not for diagnostic, therapeutics, prophylactic or in vivo use.