

**DATASHEET**

**PHB2 Rabbit Polyclonal Antibody**

CAT. NO. APA14392

**KEY FEATURES**

Target	PHB2	Source / Host	Rabbit
Reactivity	Human, Mouse, Rat	Clonality	Polyclonal
Applications	WB, IHC, IP	Conjugation	Unconjugated
Form / Buffer	Liquid in 0.42% Potassium phosphate, 0.87% Sodium chloride, pH 7.3, 30% glycerol, and 0.01% sodium azide.		Storage at -20°C

**BACKGROUND**

Protein with pleiotropic attributes mediated in a cell-compartment- and tissue-specific manner, which include the plasma membrane-associated cell signaling functions, mitochondrial chaperone, and transcriptional co-regulator of transcription factors and sex steroid hormones in the nucleus.

**APPLICATION**

To ensure optimal assay performance, AREX recommends conducting reagent titration tailored to each testing system for optimal detection results.

WB	1:500 - 1:1000
IHC	1:50 - 1:200
IP	1:10 - 1:50

\*Results are sample-specific. Please refer to your local assay conditions and test parameters for reference.

**PRODUCT OVERVIEW**

Description	Rabbit polyclonal antibody to PHB2
Specificity	Recognizes endogenous levels of PHB2 protein.
Antibody Type	Primary antibody
Immunogen	Recombinant fusion protein of human PHB2
Purification	The antibody was purified by immunogen affinity chromatography.
Molecular Weight	Predicted: 29; Observed: 32 kD
Form/Buffer	Liquid in 0.42% Potassium phosphate, 0.87% Sodium chloride, pH 7.3, 30% glycerol, and 0.01% sodium azide.
Alternative Names	BAP; REA; Prohibitin-2; B-cell receptor-associated protein BAP37; D-prohibitin; Repressor of estrogen receptor activity
Gene Symbol	PHB2
Entrez Gene	11331(Human); 12034(Mouse); 114766(Rat)
SwissProt	Q99623(Human); O35129(Mouse); Q5XIH7(Rat)

\*AREX continuously optimizes our products. Webpage content may not reflect the latest updates. For inquiries, please contact [info@arexbio.com](mailto:info@arexbio.com) or your local distributor.

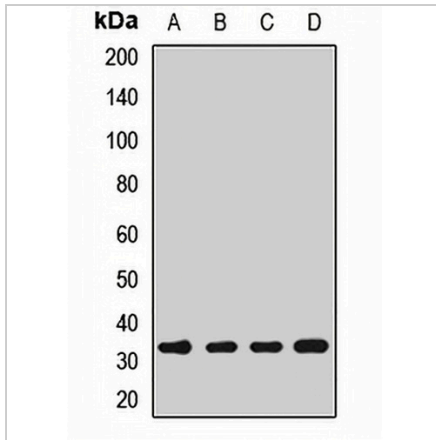
\*Clone Number, Reactivity, Source/Host and Clonality can be found in the product name and Key Features section above.

**DATASHEET**

**PHB2 Rabbit Polyclonal Antibody**

CAT. NO. APA14392

**DATA**



Western blot analysis of PHB2 expression in HepG2 (A), A549 (B), mouse heart (C), rat liver (D) whole cell lysates. (Predicted band size: 29; 33 kD; Observed band size: 32 kD)

Data 2

Immunohistochemical analysis of PHB2 staining in human breast cancer formalin fixed paraffin embedded tissue section. The section was pre-treated using heat mediated antigen retrieval with sodium citrate buffer (pH 6.0). The section was then incubated with the antibody at room temperature and detected using an HRP conjugated compact polymer system. DAB was used as the chromogen. The section was then counterstained with haematoxylin and mounted with DPX.

**STORAGE**

Store at 4°C short term. For long term storage, store at -20°C, avoiding freeze/thaw cycles.

**NOTE**

For Research Use Only. Not for diagnostic, therapeutics, prophylactic or in vivo use.