

DATASHEET

KAP3 Rabbit Polyclonal Antibody

CAT. NO. APA14394

KEY FEATURES

Target	KAP3	Source / Host	Rabbit
Reactivity	Human, Mouse, Rat	Clonality	Polyclonal
Applications	WB, IF/ICC	Conjugation	Unconjugated
Form / Buffer	Liquid in 0.42% Potassium phosphate, 0.87% Sodium chloride, pH 7.3, 30% glycerol, and 0.01% sodium azide.		Storage at -20°C

BACKGROUND

Involved in tethering the chromosomes to the spindle pole and in chromosome movement. Binds to the tail domain of the KIF3A/KIF3B heterodimer to form a heterotrimeric KIF3 complex and may regulate the membrane binding of this complex .

APPLICATION

To ensure optimal assay performance, AREX recommends conducting reagent titration tailored to each testing system for optimal detection results.

WB	1:500 - 1:2000
IF/ICC	1:50 - 1:200

*Results are sample-specific. Please refer to your local assay conditions and test parameters for reference.

PRODUCT OVERVIEW

Description	Rabbit polyclonal antibody to KAP3
Specificity	Recognizes endogenous levels of KAP3 protein.
Antibody Type	Primary antibody
Immunogen	Recombinant fusion protein of human KAP3
Purification	The antibody was purified by immunogen affinity chromatography.
Molecular Weight	Predicted: 82; Observed: 110 kD
Form/Buffer	Liquid in 0.42% Potassium phosphate, 0.87% Sodium chloride, pH 7.3, 30% glycerol, and 0.01% sodium azide.
Alternative Names	KIF3AP; SMAP; Kinesin-associated protein 3; KAP-3; KAP3; Smg GDS-associated protein
Gene Symbol	KIFAP3
Entrez Gene	22920(Human); 16579(Mouse)
SwissProt	Q92845(Human); P70188(Mouse)

*AREX continuously optimizes our products. Webpage content may not reflect the latest updates. For inquiries, please contact info@arexbio.com or your local distributor.

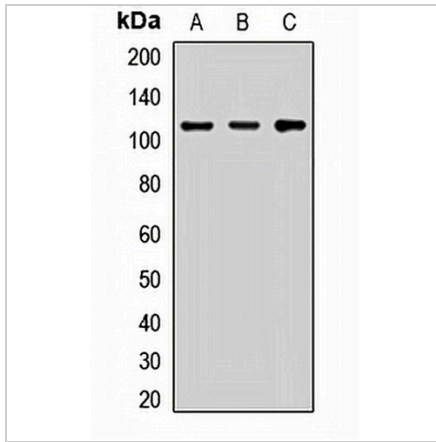
*Clone Number, Reactivity, Source/Host and Clonality can be found in the product name and Key Features section above.

DATASHEET

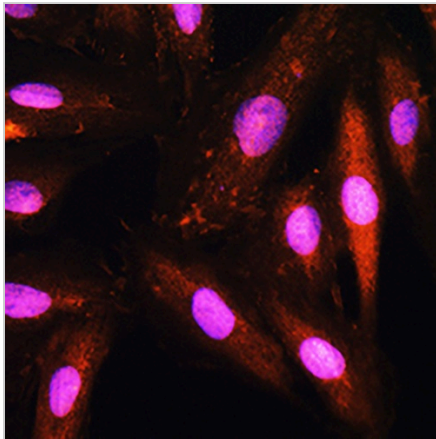
KAP3 Rabbit Polyclonal Antibody

CAT. NO. APA14394

DATA



Western blot analysis of KAP3 expression in SHSY5Y (A), mouse brain (B), rat lung (C) whole cell lysates. (Predicted band size: 82; 86; 91 kD; Observed band size: 110 kD)



Immunofluorescent analysis of KAP3 staining in H9C2 cells. Formalin-fixed cells were permeabilized with 0.1% Triton X-100 in TBS for 5-10 minutes and blocked with 3% BSA-PBS for 30 minutes at room temperature. Cells were probed with the primary antibody in 3% BSA-PBS and incubated overnight at 4 °C in a humidified chamber. Cells were washed with PBST and incubated with a AREX® Fluor 594-conjugated secondary antibody (red) in PBS at room temperature in the dark. DAPI was used to stain the cell nuclei (blue).

STORAGE

Store at 4°C short term. For long term storage, store at -20°C, avoiding freeze/thaw cycles.

NOTE

For Research Use Only. Not for diagnostic, therapeutics, prophylactic or in vivo use.