

DATASHEET

NSMF Rabbit Polyclonal Antibody

CAT. NO. APA14399

KEY FEATURES

Target	NSMF	Source / Host	Rabbit
Reactivity	Human, Mouse, Rat	Clonality	Polyclonal
Applications	WB	Conjugation	Unconjugated
Form / Buffer	Liquid in 0.42% Potassium phosphate, 0.87% Sodium chloride, pH 7.3, 30% glycerol, and 0.01% sodium azide.		Storage at -20°C

BACKGROUND

Couples NMDA-sensitive glutamate receptor signaling to the nucleus and triggers long-lasting changes in the cytoarchitecture of dendrites and spine synapse processes. Part of the cAMP response element-binding protein (CREB) shut-off signaling pathway. Stimulates outgrowth of olfactory axons and migration of gonadotropin-releasing hormone (GnRH) and luteinizing-hormone-releasing hormone (LHRH) neuronal cells.

APPLICATION

To ensure optimal assay performance, AREX recommends conducting reagent titration tailored to each testing system for optimal detection results.

WB	1:500 - 1:2000
----	----------------

*Results are sample-specific. Please refer to your local assay conditions and test parameters for reference.

PRODUCT OVERVIEW

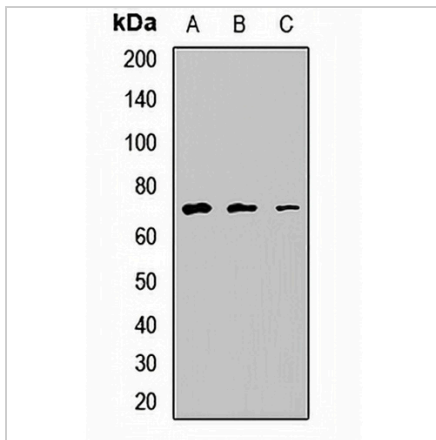
Description	Rabbit polyclonal antibody to NSMF
Specificity	Recognizes endogenous levels of NSMF protein.
Antibody Type	Primary antibody
Immunogen	Recombinant fusion protein of human NSMF
Purification	The antibody was purified by immunogen affinity chromatography.
Molecular Weight	Predicted: 44; Observed: 70 kD
Form/Buffer	Liquid in 0.42% Potassium phosphate, 0.87% Sodium chloride, pH 7.3, 30% glycerol, and 0.01% sodium azide.
Alternative Names	NELF; NMDA receptor synaptonuclear signaling and neuronal migration factor; Nasal embryonic luteinizing hormone-releasing hormone factor; Nasal embryonic LHRH factor
Gene Symbol	NSMF
Entrez Gene	26012(Human); 56876(Mouse); 117536(Rat)
SwissProt	Q6X4W1(Human); Q99NF2(Mouse); Q9EPI6(Rat)

*AREX continuously optimizes our products. Webpage content may not reflect the latest updates. For inquiries, please contact info@arexbio.com or your local distributor.

*Clone Number, Reactivity, Source/Host and Clonality can be found in the product name and Key Features section above.

DATASHEET**NSMF Rabbit Polyclonal Antibody**

CAT. NO. APA14399

DATA

Western blot analysis of NSMF expression in LO2 (A), HT29 (B), mouse brain (C) whole cell lysates. (Predicted band size: 44; 56; 57; 59; 60 kD; Observed band size: 70 kD)

STORAGE

Store at 4°C short term. For long term storage, store at -20°C, avoiding freeze/thaw cycles.

NOTE

For Research Use Only. Not for diagnostic, therapeutics, prophylactic or in vivo use.