

DATASHEET

BLOC1S6 Rabbit Polyclonal Antibody

CAT. NO. APA14402

KEY FEATURES

Target	BLOC1S6	Source / Host	Rabbit
Reactivity	Human, Mouse, Rat	Clonality	Polyclonal
Applications	WB	Conjugation	Unconjugated
Form / Buffer	Liquid in 0.42% Potassium phosphate, 0.87% Sodium chloride, pH 7.3, 30% glycerol, and 0.01% sodium azide.		Storage at -20°C

BACKGROUND

Component of the BLOC-1 complex, a complex that is required for normal biogenesis of lysosome-related organelles (LRO), such as platelet dense granules and melanosomes. In concert with the AP-3 complex, the BLOC-1 complex is required to target membrane protein cargos into vesicles assembled at cell bodies for delivery into neurites and nerve terminals. The BLOC-1 complex, in association with SNARE proteins, is also proposed to be involved in neurite extension. May play a role in intracellular vesicle trafficking, particularly in the vesicle-docking and fusion process.

APPLICATION

To ensure optimal assay performance, AREX recommends conducting reagent titration tailored to each testing system for optimal detection results.

WB	1:500 - 1:1000
----	----------------

*Results are sample-specific. Please refer to your local assay conditions and test parameters for reference.

PRODUCT OVERVIEW

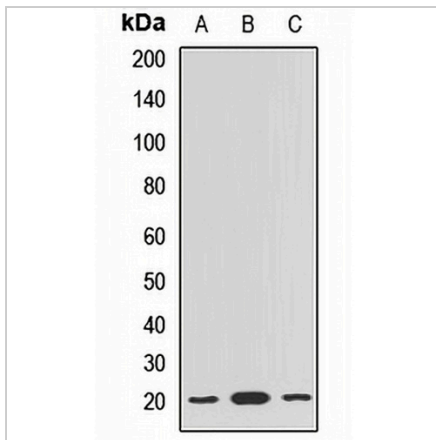
Description	Rabbit polyclonal antibody to BLOC1S6
Specificity	Recognizes endogenous levels of BLOC1S6 protein.
Antibody Type	Primary antibody
Immunogen	Recombinant fusion protein of human BLOC1S6
Purification	The antibody was purified by immunogen affinity chromatography.
Molecular Weight	Predicted: 8; Observed: 20 kD
Form/Buffer	Liquid in 0.42% Potassium phosphate, 0.87% Sodium chloride, pH 7.3, 30% glycerol, and 0.01% sodium azide.
Alternative Names	PA; PLDN; Biogenesis of lysosome-related organelles complex 1 subunit 6; BLOC-1 subunit 6; Pallid protein homolog; Pallidin; Syntaxin 13-interacting protein
Gene Symbol	BLOC1S6
Entrez Gene	26258(Human); 18457(Mouse); 317630(Rat)
SwissProt	Q9UL45(Human); Q9R0C0(Mouse); Q4V8A6(Rat)

*AREX continuously optimizes our products. Webpage content may not reflect the latest updates. For inquiries, please contact info@arexbio.com or your local distributor.

*Clone Number, Reactivity, Source/Host and Clonality can be found in the product name and Key Features section above.

DATASHEET**BLOC1S6 Rabbit Polyclonal Antibody**

CAT. NO. APA14402

DATA

Western blot analysis of BLOC1S6 expression in HepG2 (A), K562 (B), rat testis (C) whole cell lysates. (Predicted band size: 8; 19 kD; Observed band size: 20 kD)

STORAGE

Store at 4°C short term. For long term storage, store at -20°C, avoiding freeze/thaw cycles.

NOTE

For Research Use Only. Not for diagnostic, therapeutics, prophylactic or in vivo use.