

**DATASHEET**

**ZRF1 Rabbit Polyclonal Antibody**

CAT. NO. APA14404

**KEY FEATURES**

Target	ZRF1	Source / Host	Rabbit
Reactivity	Human, Mouse	Clonality	Polyclonal
Applications	WB	Conjugation	Unconjugated
Form / Buffer	Liquid in 0.42% Potassium phosphate, 0.87% Sodium chloride, pH 7.3, 30% glycerol, and 0.01% sodium azide.		Storage at-20°C

**BACKGROUND**

Acts both as a chaperone in the cytosol and as a chromatin regulator in the nucleus. When cytosolic, acts as a molecular chaperone: component of the ribosome-associated complex (RAC), a complex involved in folding or maintaining nascent polypeptides in a folding-competent state. In the RAC complex, stimulates the ATPase activity of the ribosome-associated pool of Hsp70-type chaperones HSPA14 that bind to the nascent polypeptide chain. When nuclear, mediates the switching from polycomb-repressed genes to an active state: specifically recruited at histone H2A ubiquitinated at 'Lys-119' (H2AK119ub), and promotes the displacement of the polycomb PRC1 complex from chromatin, thereby facilitating transcription activation.

**APPLICATION**

To ensure optimal assay performance, AREX recommends conducting reagent titration tailored to each testing system for optimal detection results.

WB	1:500 - 1:2000
----	----------------

\*Results are sample-specific. Please refer to your local assay conditions and test parameters for reference.

**PRODUCT OVERVIEW**

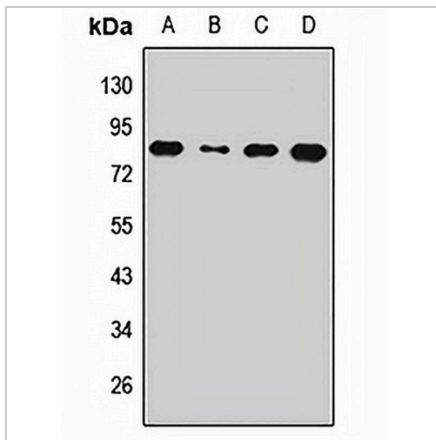
Description	Rabbit polyclonal antibody to ZRF1
Specificity	Recognizes endogenous levels of ZRF1 protein.
Antibody Type	Primary antibody
Immunogen	Recombinant fusion protein of human ZRF1
Purification	The antibody was purified by immunogen affinity chromatography.
Molecular Weight	Predicted: 65; Observed: 80 kD
Form/Buffer	Liquid in 0.42% Potassium phosphate, 0.87% Sodium chloride, pH 7.3, 30% glycerol, and 0.01% sodium azide.
Alternative Names	MPHOSPH11; MPP11; ZRF1; Dnaj homolog subfamily C member 2; M-phase phosphoprotein 11; Zuotin-related factor 1
Gene Symbol	DNAJC2
Entrez Gene	27000(Human); 22791(Mouse)
SwissProt	Q99543(Human); P54103(Mouse)

\*AREX continuously optimizes our products. Webpage content may not reflect the latest updates. For inquiries, please contact [info@arexbio.com](mailto:info@arexbio.com) or your local distributor.

\*Clone Number, Reactivity, Source/Host and Clonality can be found in the product name and Key Features section above.

**DATASHEET****ZRF1 Rabbit Polyclonal Antibody**

CAT. NO. APA14404

**DATA**

Western blot analysis of ZRF1 expression in MCF7 (A), HeLa (B), A549 (C), mouse spleen (D) whole cell lysates. (Predicted band size: 65; 71 kD; Observed band size: 80 kD)

**STORAGE**

Store at 4°C short term. For long term storage, store at -20°C, avoiding freeze/thaw cycles.

**NOTE**

For Research Use Only. Not for diagnostic, therapeutics, prophylactic or in vivo use.