

DATASHEET

AFF4 Rabbit Polyclonal Antibody

CAT. NO. APA14405

KEY FEATURES

Target	AFF4	Source / Host	Rabbit
Reactivity	Human, Mouse	Clonality	Polyclonal
Applications	WB	Conjugation	Unconjugated
Form / Buffer	Liquid in 0.42% Potassium phosphate, 0.87% Sodium chloride, pH 7.3, 30% glycerol, and 0.01% sodium azide.		Storage at -20°C

BACKGROUND

Key component of the super elongation complex (SEC), a complex required to increase the catalytic rate of RNA polymerase II transcription by suppressing transient pausing by the polymerase at multiple sites along the DNA. In the SEC complex, AFF4 acts as a central scaffold that recruits other factors through direct interactions with ELL proteins (ELL, ELL2 or ELL3) and the P-TEFb complex. In case of infection by HIV-1 virus, the SEC complex is recruited by the viral Tat protein to stimulate viral gene expression.

APPLICATION

To ensure optimal assay performance, AREX recommends conducting reagent titration tailored to each testing system for optimal detection results.

WB	1:500 - 1:2000
----	----------------

*Results are sample-specific. Please refer to your local assay conditions and test parameters for reference.

PRODUCT OVERVIEW

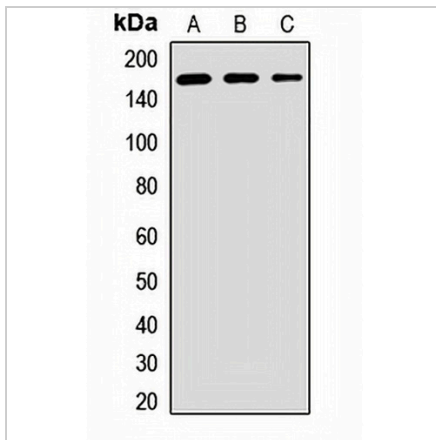
Description	Rabbit polyclonal antibody to AFF4
Specificity	Recognizes endogenous levels of AFF4 protein.
Antibody Type	Primary antibody
Immunogen	Recombinant fusion protein of human AFF4
Purification	The antibody was purified by immunogen affinity chromatography.
Molecular Weight	Predicted: 38; Observed: 150 kD
Form/Buffer	Liquid in 0.42% Potassium phosphate, 0.87% Sodium chloride, pH 7.3, 30% glycerol, and 0.01% sodium azide.
Alternative Names	AF5Q31; MCEF; AF4/FMR2 family member 4; ALL1-fused gene from chromosome 5q31 protein; Protein AF-5q31; Major CDK9 elongation factor-associated protein
Gene Symbol	AFF4
Entrez Gene	27125(Human); 93736(Mouse)
SwissProt	Q9UHB7(Human); Q9ESC8(Mouse)

*AREX continuously optimizes our products. Webpage content may not reflect the latest updates. For inquiries, please contact info@arexbio.com or your local distributor.

*Clone Number, Reactivity, Source/Host and Clonality can be found in the product name and Key Features section above.

DATASHEET**AFF4 Rabbit Polyclonal Antibody**

CAT. NO. APA14405

DATA

Western blot analysis of AFF4 expression in HeLa (A), MCF7 (B), mouse pancreas (C) whole cell lysates. (Predicted band size: 38; 98; 127 kD; Observed band size: 150 kD)

STORAGE

Store at 4°C short term. For long term storage, store at -20°C, avoiding freeze/thaw cycles.

NOTE

For Research Use Only. Not for diagnostic, therapeutics, prophylactic or in vivo use.