

DATASHEET

HAUS6 Rabbit Polyclonal Antibody

CAT. NO. APA14413

KEY FEATURES

Target	HAUS6	Source / Host	Rabbit
Reactivity	Human, Mouse, Rat	Clonality	Polyclonal
Applications	WB	Conjugation	Unconjugated
Form / Buffer	Liquid in 0.42% Potassium phosphate, 0.87% Sodium chloride, pH 7.3, 30% glycerol, and 0.01% sodium azide.		Storage at -20°C

BACKGROUND

Contributes to mitotic spindle assembly, maintenance of centrosome integrity and completion of cytokinesis as part of the HAUS augmin-like complex. Promotes the nucleation of microtubules from the spindle through recruitment of NEDD1 and gamma-tubulin.

APPLICATION

To ensure optimal assay performance, AREX recommends conducting reagent titration tailored to each testing system for optimal detection results.

WB	1:500 - 1:1000
----	----------------

*Results are sample-specific. Please refer to your local assay conditions and test parameters for reference.

PRODUCT OVERVIEW

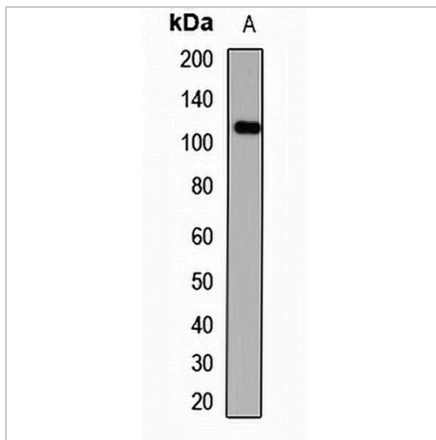
Description	Rabbit polyclonal antibody to HAUS6
Specificity	Recognizes endogenous levels of HAUS6 protein.
Antibody Type	Primary antibody
Immunogen	Recombinant fusion protein of human HAUS6
Purification	The antibody was purified by immunogen affinity chromatography.
Molecular Weight	Predicted: 69; Observed: 109 kD
Form/Buffer	Liquid in 0.42% Potassium phosphate, 0.87% Sodium chloride, pH 7.3, 30% glycerol, and 0.01% sodium azide.
Alternative Names	DGT6; FAM29A; KIAA1574; HAUS augmin-like complex subunit 6
Gene Symbol	HAUS6
Entrez Gene	54801(Human)
SwissProt	Q7Z4H7(Human)

*AREX continuously optimizes our products. Webpage content may not reflect the latest updates. For inquiries, please contact info@arexbio.com or your local distributor.

*Clone Number, Reactivity, Source/Host and Clonality can be found in the product name and Key Features section above.

DATASHEET**HAUS6 Rabbit Polyclonal Antibody**

CAT. NO. APA14413

DATA

Western blot analysis of HAUS6 expression in mouse spleen (A) whole cell lysates.
(Predicted band size: 69; 104; 108 kD; Observed band size: 109 kD)

STORAGE

Store at 4°C short term. For long term storage, store at -20°C, avoiding freeze/thaw cycles.

NOTE

For Research Use Only. Not for diagnostic, therapeutics, prophylactic or in vivo use.