

DATASHEET

CC2D1A Rabbit Polyclonal Antibody

CAT. NO. APA14414

KEY FEATURES

Target	CC2D1A	Source / Host	Rabbit
Reactivity	Human, Mouse, Rat	Clonality	Polyclonal
Applications	WB	Conjugation	Unconjugated
Form / Buffer	Liquid in 0.42% Potassium phosphate, 0.87% Sodium chloride, pH 7.3, 30% glycerol, and 0.01% sodium azide.		Storage at -20°C

BACKGROUND

Transcription factor that binds specifically to the DRE (dual repressor element) and represses HTR1A gene transcription in neuronal cells. The combination of calcium and ATP specifically inactivates the binding with FRE. May play a role in the altered regulation of HTR1A associated with anxiety and major depression. Mediates HDAC-independent repression of HTR1A promoter in neuronal cell. Performs essential function in controlling functional maturation of synapses . Plays distinct roles depending on its localization. When cytoplasmic, acts as a scaffold protein in the PI3K/PDK1/AKT pathway. Repressor of HTR1A when nuclear. In the centrosome, regulates spindle pole localization of the cohesin subunit SCC1/RAD21, thereby mediating centriole cohesion during mitosis.

APPLICATION

To ensure optimal assay performance, AREX recommends conducting reagent titration tailored to each testing system for optimal detection results.

WB	1:500 - 1:2000
----	----------------

*Results are sample-specific. Please refer to your local assay conditions and test parameters for reference.

PRODUCT OVERVIEW

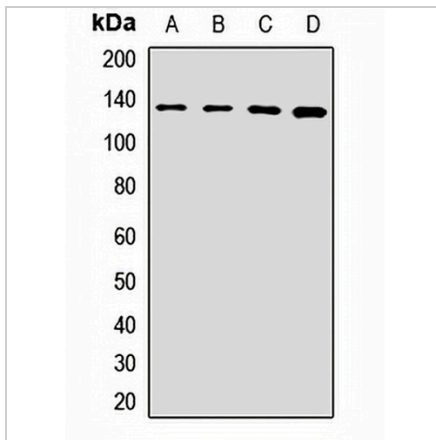
Description	Rabbit polyclonal antibody to CC2D1A
Specificity	Recognizes endogenous levels of CC2D1A protein.
Antibody Type	Primary antibody
Immunogen	Recombinant fusion protein of human CC2D1A
Purification	The antibody was purified by immunogen affinity chromatography.
Molecular Weight	Predicted: 103; Observed: 131 kD
Form/Buffer	Liquid in 0.42% Potassium phosphate, 0.87% Sodium chloride, pH 7.3, 30% glycerol, and 0.01% sodium azide.
Alternative Names	AKI1; Coiled-coil and C2 domain-containing protein 1A; Akt kinase-interacting protein 1; Five prime repressor element under dual repression-binding protein 1; FRE under dual repression-binding protein 1; Freud-1; Putative NF-kappa-B-activating protein 023N
Gene Symbol	CC2D1A
Entrez Gene	54862(Human); 212139(Mouse); 288908(Rat)
SwissProt	Q6P1N0(Human); Q8K1A6(Mouse); Q66HA5(Rat)

*AREX continuously optimizes our products. Webpage content may not reflect the latest updates. For inquiries, please contact info@arexbio.com or your local distributor.

*Clone Number, Reactivity, Source/Host and Clonality can be found in the product name and Key Features section above.

DATASHEET**CC2D1A Rabbit Polyclonal Antibody**

CAT. NO. APA14414

DATA

Western blot analysis of CC2D1A expression in A549 (A), SKOV3 (B), mouse brain (C), rat brain (D) whole cell lysates. (Predicted band size: 103; 104 kD; Observed band size: 131 kD)

STORAGE

Store at 4°C short term. For long term storage, store at -20°C, avoiding freeze/thaw cycles.

NOTE

For Research Use Only. Not for diagnostic, therapeutics, prophylactic or in vivo use.