

**DATASHEET**

**Collectin 11 Rabbit Polyclonal Antibody**

CAT. NO. APA14419

**KEY FEATURES**

Target	Collectin 11	Source / Host	Rabbit
Reactivity	Human, Mouse	Clonality	Polyclonal
Applications	WB, IHC	Conjugation	Unconjugated
Form / Buffer	Liquid in 0.42% Potassium phosphate, 0.87% Sodium chloride, pH 7.3, 30% glycerol, and 0.01% sodium azide.		Storage at -20°C

**BACKGROUND**

Lectin that plays a role in innate immunity, apoptosis and embryogenesis . Calcium-dependent lectin that binds self and non-self glycoproteins presenting high mannose oligosaccharides with at least one terminal alpha-1,2-linked mannose epitope . Primarily recognizes the terminal disaccharide of the glycan . Also recognizes a subset of fucosylated glycans and lipopolysaccharides . Plays a role in innate immunity through its ability to bind non-self sugars presented by microorganisms and to activate the complement through the recruitment of MAPS1 . Also plays a role in apoptosis through its ability to bind in a calcium-independent manner the DNA present at the surface of apoptotic cells and to activate the complement in response to this binding (Probable).

**APPLICATION**

To ensure optimal assay performance, AREX recommends conducting reagent titration tailored to each testing system for optimal detection results.

WB	1:500 - 1:2000
IHC	1:50 - 1:200

\*Results are sample-specific. Please refer to your local assay conditions and test parameters for reference.

**PRODUCT OVERVIEW**

Description	Rabbit polyclonal antibody to Collectin 11
Specificity	Recognizes endogenous levels of Collectin 11 protein.
Antibody Type	Primary antibody
Immunogen	Recombinant fusion protein of human Collectin 11
Purification	The antibody was purified by immunogen affinity chromatography.
Molecular Weight	Predicted: 21; Observed: 29 kD
Form/Buffer	Liquid in 0.42% Potassium phosphate, 0.87% Sodium chloride, pH 7.3, 30% glycerol, and 0.01% sodium azide.
Alternative Names	Collectin-11; Collectin kidney protein 1; CL-K1
Gene Symbol	COLEC11
Entrez Gene	78989(Human); 71693(Mouse)
SwissProt	Q9BWP8(Human); Q3SXB8(Mouse)

\*AREX continuously optimizes our products. Webpage content may not reflect the latest updates. For inquiries, please contact [info@arexbio.com](mailto:info@arexbio.com) or your local distributor.

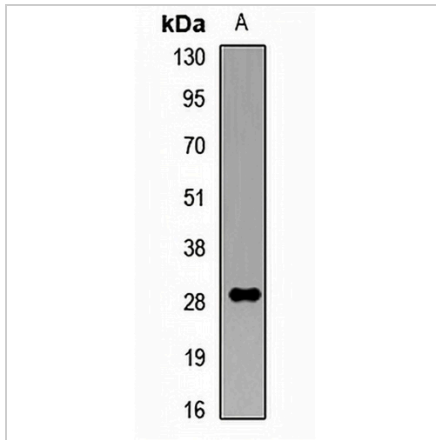
\*Clone Number, Reactivity, Source/Host and Clonality can be found in the product name and Key Features section above.

**DATASHEET**

**Collectin 11 Rabbit Polyclonal Antibody**

CAT. NO. APA14419

**DATA**



Western blot analysis of Collectin 11 expression in MCF7 (A) whole cell lysates. (Predicted band size: 21; 23; 24; 26; 28; 29; 30 kD; Observed band size: 29 kD)

Data 2

Immunohistochemical analysis of Collectin 11 staining in human brain formalin fixed paraffin embedded tissue section. The section was pre-treated using heat mediated antigen retrieval with sodium citrate buffer (pH 6.0). The section was then incubated with the antibody at room temperature and detected using an HRP conjugated compact polymer system. DAB was used as the chromogen. The section was then counterstained with haematoxylin and mounted with DPX.

**STORAGE**

Store at 4°C short term. For long term storage, store at -20°C, avoiding freeze/thaw cycles.

**NOTE**

For Research Use Only. Not for diagnostic, therapeutics, prophylactic or in vivo use.