

DATASHEET

LPCAT1 Rabbit Polyclonal Antibody

CAT. NO. APA14421

KEY FEATURES

Target	LPCAT1	Source / Host	Rabbit
Reactivity	Human, Mouse, Rat	Clonality	Polyclonal
Applications	WB	Conjugation	Unconjugated
Form / Buffer	Liquid in 0.42% Potassium phosphate, 0.87% Sodium chloride, pH 7.3, 30% glycerol, and 0.01% sodium azide.		Storage at -20°C

BACKGROUND

Exhibits acyltransferase activity . Exhibits acetyltransferase activity . Activity is calcium-independent . Catalyzes the conversion of lysophosphatidylcholine (1-acyl-sn-glycero-3-phosphocholine or LPC) into phosphatidylcholine (1,2-diacyl-sn-glycero-3-phosphocholine or PC) . Catalyzes the conversion 1-acyl-sn-glycerol-3-phosphate (lysophosphatidic acid or LPA) into 1,2-diacyl-sn-glycerol-3-phosphate (phosphatidic acid or PA) by incorporating an acyl moiety at the sn-2 position of the glycerol backbone . Displays a clear preference for saturated fatty acyl-CoAs, and 1-myristoyl or 1-palmitoyl LPC as acyl donors and acceptors, respectively .

APPLICATION

To ensure optimal assay performance, AREX recommends conducting reagent titration tailored to each testing system for optimal detection results.

WB	1:500 - 1:1000
----	----------------

*Results are sample-specific. Please refer to your local assay conditions and test parameters for reference.

PRODUCT OVERVIEW

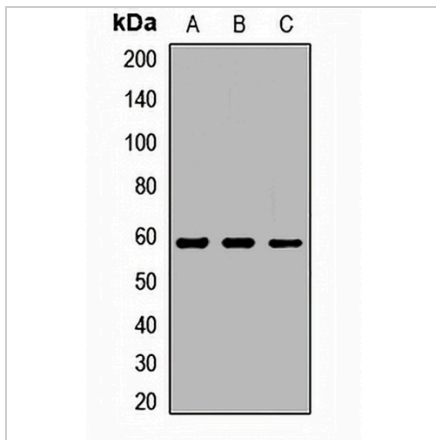
Description	Rabbit polyclonal antibody to LPCAT1
Specificity	Recognizes endogenous levels of LPCAT1 protein.
Antibody Type	Primary antibody
Immunogen	Recombinant fusion protein of human LPCAT1
Purification	The antibody was purified by immunogen affinity chromatography.
Molecular Weight	Predicted: 59 kD; Observed: 59 kD
Form/Buffer	Liquid in 0.42% Potassium phosphate, 0.87% Sodium chloride, pH 7.3, 30% glycerol, and 0.01% sodium azide.
Alternative Names	AYTL2; PFAAP3; Lysophosphatidylcholine acyltransferase 1; LPC acyltransferase 1; LPCAT-1; LysoPC acyltransferase 1; 1-acylglycerophosphocholine O-acyltransferase; 1-alkylglycerophosphocholine O-acetyltransferase; Acetyl-CoA:lyso-platelet-activating factor acetyltransferase; Acetyl-CoA:lyso-PAF acetyltransferase; Lyso-PAF acetyltransferase; LysoPAFAT; Acyltransferase-like 2; Phosphonoformate immuno-associated protein 3
Gene Symbol	LPCAT1
Entrez Gene	79888(Human); 210992(Mouse); 361467(Rat)
SwissProt	Q8NF37(Human); Q3TFD2(Mouse); Q1HAQ0(Rat)

*AREX continuously optimizes our products. Webpage content may not reflect the latest updates. For inquiries, please contact info@arexbio.com or your local distributor.

*Clone Number, Reactivity, Source/Host and Clonality can be found in the product name and Key Features section above.

DATASHEET**LPCAT1 Rabbit Polyclonal Antibody**

CAT. NO. APA14421

DATA

Western blot analysis of LPCAT1 expression in Hela (A), A549 (B), mouse lung (C) whole cell lysates. (Predicted band size: 59 kD; Observed band size: 59 kD)

STORAGE

Store at 4°C short term. For long term storage, store at -20°C, avoiding freeze/thaw cycles.

NOTE

For Research Use Only. Not for diagnostic, therapeutics, prophylactic or in vivo use.