

DATASHEET

GFM1 Rabbit Polyclonal Antibody

CAT. NO. APA14424

KEY FEATURES

Target	GFM1	Source / Host	Rabbit
Reactivity	Human, Mouse, Rat	Clonality	Polyclonal
Applications	WB, IHC	Conjugation	Unconjugated
Form / Buffer	Liquid in 0.42% Potassium phosphate, 0.87% Sodium chloride, pH 7.3, 30% glycerol, and 0.01% sodium azide.		Storage at -20°C

BACKGROUND

Mitochondrial GTPase that catalyzes the GTP-dependent ribosomal translocation step during translation elongation. During this step, the ribosome changes from the pre-translocational (PRE) to the post-translocational (POST) state as the newly formed A-site-bound peptidyl-tRNA and P-site-bound deacylated tRNA move to the P and E sites, respectively. Catalyzes the coordinated movement of the two tRNA molecules, the mRNA and conformational changes in the ribosome. Does not mediate the disassembly of ribosomes from messenger RNA at the termination of mitochondrial protein biosynthesis.

APPLICATION

To ensure optimal assay performance, AREX recommends conducting reagent titration tailored to each testing system for optimal detection results.

WB	1:500 - 1:1000
IHC	1:50 - 1:200

*Results are sample-specific. Please refer to your local assay conditions and test parameters for reference.

PRODUCT OVERVIEW

Description	Rabbit polyclonal antibody to GFM1
Specificity	Recognizes endogenous levels of GFM1 protein.
Antibody Type	Primary antibody
Immunogen	Recombinant fusion protein of human GFM1
Purification	The antibody was purified by immunogen affinity chromatography.
Molecular Weight	Predicted: 83; Observed: 100 kD
Form/Buffer	Liquid in 0.42% Potassium phosphate, 0.87% Sodium chloride, pH 7.3, 30% glycerol, and 0.01% sodium azide.
Alternative Names	EFG; EFG1; GFM; Elongation factor G mitochondrial; EF-Gmt; Elongation factor G 1 mitochondrial; mEF-G 1; Elongation factor G1; hEFG1
Gene Symbol	GFM1
Entrez Gene	85476(Human); 28030(Mouse); 114017(Rat)
SwissProt	Q96RP9(Human); Q8K0D5(Mouse); Q07803(Rat)

*AREX continuously optimizes our products. Webpage content may not reflect the latest updates. For inquiries, please contact info@arexbio.com or your local distributor.

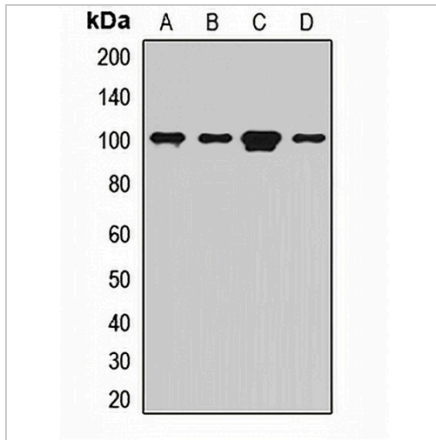
*Clone Number, Reactivity, Source/Host and Clonality can be found in the product name and Key Features section above.

DATASHEET

GFM1 Rabbit Polyclonal Antibody

CAT. NO. APA14424

DATA



Western blot analysis of GFM1 expression in SKOV3 (A), HeLa (B), mouse liver (C), rat heart (D) whole cell lysates. (Predicted band size: 83; 85 kD; Observed band size: 100 kD)

Data 2

Immunohistochemical analysis of GFM1 staining in human brain formalin fixed paraffin embedded tissue section. The section was pre-treated using heat mediated antigen retrieval with sodium citrate buffer (pH 6.0). The section was then incubated with the antibody at room temperature and detected using an HRP conjugated compact polymer system. DAB was used as the chromogen. The section was then counterstained with haematoxylin and mounted with DPX.

STORAGE

Store at 4°C short term. For long term storage, store at -20°C, avoiding freeze/thaw cycles.

NOTE

For Research Use Only. Not for diagnostic, therapeutics, prophylactic or in vivo use.