

DATASHEET

SLC22A12 Rabbit Polyclonal Antibody

CAT. NO. APA14427

KEY FEATURES

Target	SLC22A12	Source / Host	Rabbit
Reactivity	Human, Mouse, Rat	Clonality	Polyclonal
Applications	WB	Conjugation	Unconjugated
Form / Buffer	Liquid in 0.42% Potassium phosphate, 0.87% Sodium chloride, pH 7.3, 30% glycerol, and 0.01% sodium azide.		Storage at -20°C

BACKGROUND

Electroneutral antiporter that translocates urate across the apical membrane of proximal tubular cells in exchange for monovalent organic or inorganic anions. Involved in renal reabsorption of urate and helps maintaining blood levels of uric acid. Mediates urate uptake by an exchange with organic anions such as (S)-lactate and nicotinate, and inorganic anion Cl(-). Other inorganic anions such as Br(-), I(-) and NO3(-) may also act as counteranions that exchange for urate. Also mediates orotate tubular uptake coupled with nicotinate efflux and to a lesser extent with lactate efflux, therefore displaying a potential role in orotate renal reabsorption. Orotate transport is Cl(-)-dependent.

APPLICATION

To ensure optimal assay performance, AREX recommends conducting reagent titration tailored to each testing system for optimal detection results.

WB	1:500 - 1:2000
----	----------------

*Results are sample-specific. Please refer to your local assay conditions and test parameters for reference.

PRODUCT OVERVIEW

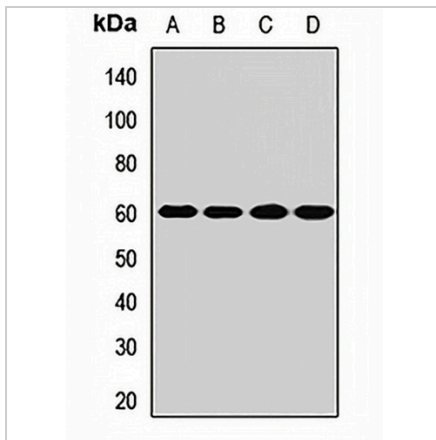
Description	Rabbit polyclonal antibody to SLC22A12
Specificity	Recognizes endogenous levels of SLC22A12 protein.
Antibody Type	Primary antibody
Immunogen	Recombinant fusion protein of human SLC22A12
Purification	The antibody was purified by immunogen affinity chromatography.
Molecular Weight	Predicted: 35; Observed: 60 kD
Form/Buffer	Liquid in 0.42% Potassium phosphate, 0.87% Sodium chloride, pH 7.3, 30% glycerol, and 0.01% sodium azide.
Alternative Names	OATL4; URAT1; Solute carrier family 22 member 12; Organic anion transporter 4-like protein; Renal-specific transporter; RST; Urate anion exchanger 1
Gene Symbol	SLC22A12
Entrez Gene	116085(Human); 20521(Mouse); 365398(Rat)
SwissProt	Q96S37(Human); Q8CFZ5(Mouse); Q3ZAV1(Rat)

*AREX continuously optimizes our products. Webpage content may not reflect the latest updates. For inquiries, please contact info@arexbio.com or your local distributor.

*Clone Number, Reactivity, Source/Host and Clonality can be found in the product name and Key Features section above.

DATASHEET**SLC22A12 Rabbit Polyclonal Antibody**

CAT. NO. APA14427

DATA

Western blot analysis of SLC22A12 expression in HeLa (A), HepG2 (B), mouse kidney (C), rat kidney (D) whole cell lysates. (Predicted band size: 35; 47; 56; 59 kD; Observed band size: 60 kD)

STORAGE

Store at 4°C short term. For long term storage, store at -20°C, avoiding freeze/thaw cycles.

NOTE

For Research Use Only. Not for diagnostic, therapeutics, prophylactic or in vivo use.