

DATASHEET

NEDD1 Rabbit Polyclonal Antibody

CAT. NO. APA14428

KEY FEATURES

Target	NEDD1	Source / Host	Rabbit
Reactivity	Human, Mouse, Rat	Clonality	Polyclonal
Applications	WB, IF/ICC	Conjugation	Unconjugated
Form / Buffer	Liquid in 0.42% Potassium phosphate, 0.87% Sodium chloride, pH 7.3, 30% glycerol, and 0.01% sodium azide.		Storage at-20°C

BACKGROUND

Required for mitosis progression. Promotes the nucleation of microtubules from the spindle.

APPLICATION

To ensure optimal assay performance, AREX recommends conducting reagent titration tailored to each testing system for optimal detection results.

WB	1:500 - 1:2000
IF/ICC	1:50 - 1:200

*Results are sample-specific. Please refer to your local assay conditions and test parameters for reference.

PRODUCT OVERVIEW

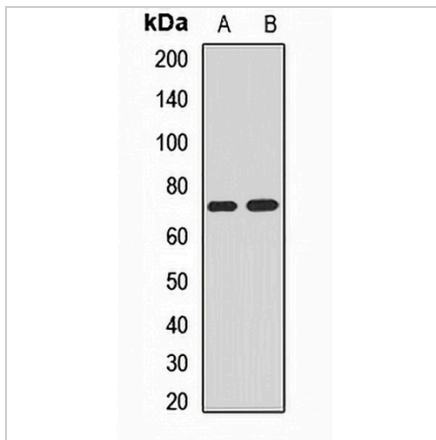
Description	Rabbit polyclonal antibody to NEDD1
Specificity	Recognizes endogenous levels of NEDD1 protein.
Antibody Type	Primary antibody
Immunogen	Recombinant fusion protein of human NEDD1
Purification	The antibody was purified by immunogen affinity chromatography.
Molecular Weight	Predicted: 62; Observed: 72 kD
Form/Buffer	Liquid in 0.42% Potassium phosphate, 0.87% Sodium chloride, pH 7.3, 30% glycerol, and 0.01% sodium azide.
Alternative Names	Protein NEDD1; Neural precursor cell expressed developmentally down-regulated protein 1; NEDD-1
Gene Symbol	NEDD1
Entrez Gene	121441(Human); 17997(Mouse)
SwissProt	Q8NHV4(Human); P33215(Mouse)

*AREX continuously optimizes our products. Webpage content may not reflect the latest updates. For inquiries, please contact info@arexbio.com or your local distributor.

*Clone Number, Reactivity, Source/Host and Clonality can be found in the product name and Key Features section above.

DATASHEET**NEDD1 Rabbit Polyclonal Antibody**

CAT. NO. APA14428

DATA

Western blot analysis of NEDD1 expression in mouse brain (A), rat brain (B) whole cell lysates. (Predicted band size: 62; 71; 72 kD; Observed band size: 72 kD)

STORAGE

Store at 4°C short term. For long term storage, store at -20°C, avoiding freeze/thaw cycles.

NOTE

For Research Use Only. Not for diagnostic, therapeutics, prophylactic or in vivo use.