

DATASHEET

DHX36 Rabbit Polyclonal Antibody

CAT. NO. APA14432

KEY FEATURES

Target	DHX36	Source / Host	Rabbit
Reactivity	Human, Mouse, Rat	Clonality	Polyclonal
Applications	WB	Conjugation	Unconjugated
Form / Buffer	Liquid in 0.42% Potassium phosphate, 0.87% Sodium chloride, pH 7.3, 30% glycerol, and 0.01% sodium azide.		Storage at-20°C

BACKGROUND

Multifunctional ATP-dependent helicase that unwinds G-quadruplex (G4) structures. Plays a role in many biological processes such as genomic integrity, gene expression regulations and as a sensor to initiate antiviral responses. G4 structures correspond to helical structures containing guanine tetrads. Binds with high affinity to and unwinds G4 structures that are formed in nucleic acids (G4-DNA and G4-RNA). Plays a role in genomic integrity. Converts the G4-RNA structure present in telomerase RNA template component (TREC) into a double-stranded RNA to promote P1 helix formation that acts as a template boundary ensuring accurate reverse transcription. Plays a role in transcriptional regulation.

APPLICATION

To ensure optimal assay performance, AREX recommends conducting reagent titration tailored to each testing system for optimal detection results.

WB	1:500 - 1:2000
----	----------------

*Results are sample-specific. Please refer to your local assay conditions and test parameters for reference.

PRODUCT OVERVIEW

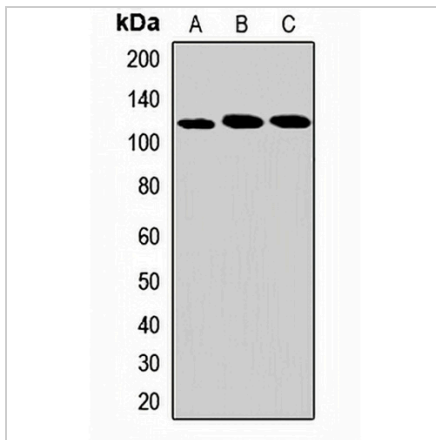
Description	Rabbit polyclonal antibody to DHX36
Specificity	Recognizes endogenous levels of DHX36 protein.
Antibody Type	Primary antibody
Immunogen	Recombinant fusion protein of human DHX36
Purification	The antibody was purified by immunogen affinity chromatography.
Molecular Weight	Predicted: 111; Observed: 114 kD
Form/Buffer	Liquid in 0.42% Potassium phosphate, 0.87% Sodium chloride, pH 7.3, 30% glycerol, and 0.01% sodium azide.
Alternative Names	DDX36; KIAA1488; MLEL1; RHAU; ATP-dependent RNA helicase DHX36; DEAH box protein 36; G4-resolvase 1; G4R1; MLE-like protein 1; RNA helicase associated with AU-rich element ARE
Gene Symbol	DHX36
Entrez Gene	170506(Human); 72162(Mouse)
SwissProt	Q9H2U1(Human); Q8VHK9(Mouse)

*AREX continuously optimizes our products. Webpage content may not reflect the latest updates. For inquiries, please contact info@arexbio.com or your local distributor.

*Clone Number, Reactivity, Source/Host and Clonality can be found in the product name and Key Features section above.

DATASHEET**DHX36 Rabbit Polyclonal Antibody**

CAT. NO. APA14432

DATA

Western blot analysis of DHX36 expression in mouse brain (A), mouse liver (B), rat brain (C) whole cell lysates. (Predicted band size: 111; 113; 114 kD; Observed band size: 114 kD)

STORAGE

Store at 4°C short term. For long term storage, store at -20°C, avoiding freeze/thaw cycles.

NOTE

For Research Use Only. Not for diagnostic, therapeutics, prophylactic or in vivo use.