

## DATASHEET

# CISD2 Rabbit Polyclonal Antibody

CAT. NO. APA14434

### KEY FEATURES

Target	CISD2	Source / Host	Rabbit
Reactivity	Human, Mouse, Rat	Clonality	Polyclonal
Applications	WB, IHC	Conjugation	Unconjugated
Form / Buffer	Liquid in 0.42% Potassium phosphate, 0.87% Sodium chloride, pH 7.3, 30% glycerol, and 0.01% sodium azide.		Storage at-20°C

### BACKGROUND

Regulator of autophagy that contributes to antagonize BECN1-mediated cellular autophagy at the endoplasmic reticulum. Participates in the interaction of BCL2 with BECN1 and is required for BCL2-mediated depression of endoplasmic reticulum Ca(2+) stores during autophagy. Contributes to BIK-initiated autophagy, while it is not involved in BIK-dependent activation of caspases. Involved in life span control, probably via its function as regulator of autophagy.

### APPLICATION

To ensure optimal assay performance, AREX recommends conducting reagent titration tailored to each testing system for optimal detection results.

WB	1:500 - 1:2000
IHC	1:50 - 1:200

\*Results are sample-specific. Please refer to your local assay conditions and test parameters for reference.

### PRODUCT OVERVIEW

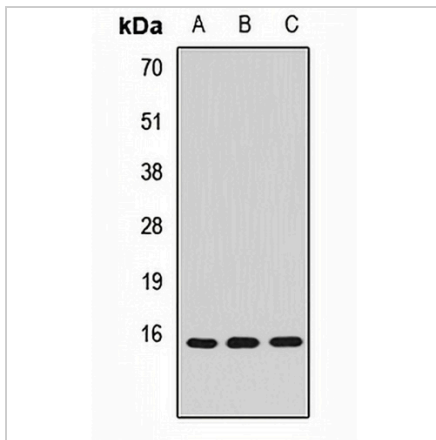
Description	Rabbit polyclonal antibody to CISD2
Specificity	Recognizes endogenous levels of CISD2 protein.
Antibody Type	Primary antibody
Immunogen	Recombinant fusion protein of human CISD2
Purification	The antibody was purified by immunogen affinity chromatography.
Molecular Weight	Predicted: 15 kD; Observed: 15 kD
Form/Buffer	Liquid in 0.42% Potassium phosphate, 0.87% Sodium chloride, pH 7.3, 30% glycerol, and 0.01% sodium azide.
Alternative Names	CDGSH2; ERIS; ZCD2; CDGSH iron-sulfur domain-containing protein 2; Endoplasmic reticulum intermembrane small protein; MitoNEET-related 1 protein; Miner1; Nutrient-deprivation autophagy factor-1; NAF-1
Gene Symbol	CISD2
Entrez Gene	493856(Human); 67006(Mouse)
SwissProt	Q8N5K1(Human); Q9CQB5(Mouse)

\*AREX continuously optimizes our products. Webpage content may not reflect the latest updates. For inquiries, please contact [info@arexbio.com](mailto:info@arexbio.com) or your local distributor.

\*Clone Number, Reactivity, Source/Host and Clonality can be found in the product name and Key Features section above.

**DATASHEET****CISD2 Rabbit Polyclonal Antibody**

CAT. NO. APA14434

**DATA**

Western blot analysis of CISD2 expression in A549 (A), K562 (B), rat lung (C) whole cell lysates. (Predicted band size: 15 kD; Observed band size: 15 kD)

**STORAGE**

Store at 4°C short term. For long term storage, store at -20°C, avoiding freeze/thaw cycles.

**NOTE**

For Research Use Only. Not for diagnostic, therapeutics, prophylactic or in vivo use.