

DATASHEET

SETD8 Rabbit Polyclonal Antibody

CAT. NO. APA14435

KEY FEATURES

Target	SETD8	Source / Host	Rabbit
Reactivity	Human, Mouse, Rat	Clonality	Polyclonal
Applications	WB, IF/ICC	Conjugation	Unconjugated
Form / Buffer	Liquid in 0.42% Potassium phosphate, 0.87% Sodium chloride, pH 7.3, 30% glycerol, and 0.01% sodium azide.		Storage at -20°C

BACKGROUND

Protein-lysine N-methyltransferase that monomethylates both histones and non-histone proteins . Specifically monomethylates 'Lys-20' of histone H4 (H4K20me1) . H4K20me1 is enriched during mitosis and represents a specific tag for epigenetic transcriptional repression . Mainly functions in euchromatin regions, thereby playing a central role in the silencing of euchromatic genes . Required for cell proliferation, probably by contributing to the maintenance of proper higher-order structure of DNA during mitosis . Involved in chromosome condensation and proper cytokinesis . Nucleosomes are preferred as substrate compared to free histones . Mediates monomethylation of p53/TP53 at 'Lys-382', leading to repress p53/TP53-target genes .

APPLICATION

To ensure optimal assay performance, AREX recommends conducting reagent titration tailored to each testing system for optimal detection results.

WB	1:500 - 1:2000
IF/ICC	1:50 - 1:200

*Results are sample-specific. Please refer to your local assay conditions and test parameters for reference.

PRODUCT OVERVIEW

Description	Rabbit polyclonal antibody to SETD8
Specificity	Recognizes endogenous levels of SETD8 protein.
Antibody Type	Primary antibody
Immunogen	Recombinant fusion protein of human SETD8
Purification	The antibody was purified by immunogen affinity chromatography.
Molecular Weight	Predicted: 39; Observed: 43 kD
Form/Buffer	Liquid in 0.42% Potassium phosphate, 0.87% Sodium chloride, pH 7.3, 30% glycerol, and 0.01% sodium azide.
Alternative Names	KMT5A; PRSET7; SET07; SET8; N-lysine methyltransferase SETD8; H4-K20-HMTase SETD8; Histone-lysine N-methyltransferase SETD8; Lysine N-methyltransferase 5A; PR/SET domain-containing protein 07; PR-Set7; PR/SET07; SET domain-containing protein 8
Gene Symbol	SETD8
Entrez Gene	387893(Human); 67956(Mouse)
SwissProt	Q9NQR1(Human); Q2YDW7(Mouse)

*AREX continuously optimizes our products. Webpage content may not reflect the latest updates. For inquiries, please contact info@arexbio.com or your local distributor.

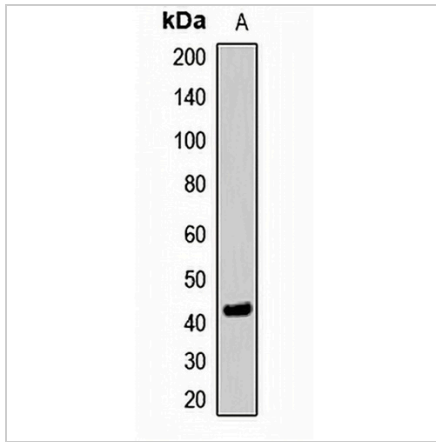
*Clone Number, Reactivity, Source/Host and Clonality can be found in the product name and Key Features section above.

DATASHEET

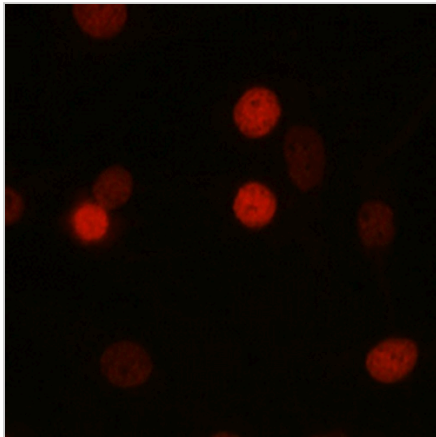
SETD8 Rabbit Polyclonal Antibody

CAT. NO. APA14435

DATA



Western blot analysis of SETD8 expression in HEK293T (A) whole cell lysates. (Predicted band size: 39; 42 kD; Observed band size: 43 kD)



Immunofluorescent analysis of SETD8 staining in C6 cells. Formalin-fixed cells were permeabilized with 0.1% Triton X-100 in TBS for 5-10 minutes and blocked with 3% BSA-PBS for 30 minutes at room temperature. Cells were probed with the primary antibody in 3% BSA-PBS and incubated overnight at 4 °C in a humidified chamber. Cells were washed with PBST and incubated with a AREX® Fluor 594-conjugated secondary antibody (red) in PBS at room temperature in the dark. DAPI was used to stain the cell nuclei (blue).

STORAGE

Store at 4°C short term. For long term storage, store at -20°C, avoiding freeze/thaw cycles.

NOTE

For Research Use Only. Not for diagnostic, therapeutics, prophylactic or in vivo use.