

DATASHEET

MOG Rabbit Polyclonal Antibody

CAT. NO. APA14441

KEY FEATURES

Target	MOG	Source / Host	Rabbit
Reactivity	Human, Mouse, Rat	Clonality	Polyclonal
Applications	WB	Conjugation	Unconjugated
Form / Buffer	Liquid in 0.42% Potassium phosphate, 0.87% Sodium chloride, pH 7.3, 30% glycerol, and 0.01% sodium azide.		Storage at -20°C

BACKGROUND

Mediates homophilic cell-cell adhesion . Minor component of the myelin sheath. May be involved in completion and/or maintenance of the myelin sheath and in cell-cell communication.

APPLICATION

To ensure optimal assay performance, AREX recommends conducting reagent titration tailored to each testing system for optimal detection results.

WB	1:500 - 1:1000
----	----------------

*Results are sample-specific. Please refer to your local assay conditions and test parameters for reference.

PRODUCT OVERVIEW

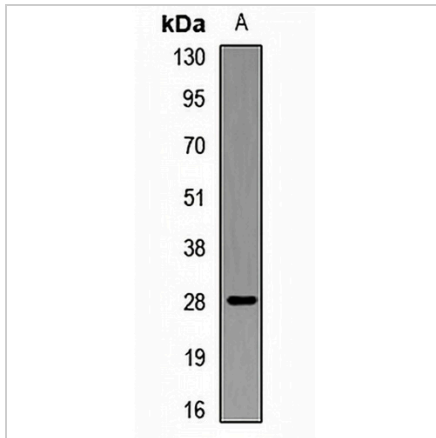
Description	Rabbit polyclonal antibody to MOG
Specificity	Recognizes endogenous levels of MOG protein.
Antibody Type	Primary antibody
Immunogen	Recombinant fusion protein of human MOG
Purification	The antibody was purified by immunogen affinity chromatography.
Molecular Weight	Predicted: 12- 14; Observed: 28 kD
Form/Buffer	Liquid in 0.42% Potassium phosphate, 0.87% Sodium chloride, pH 7.3, 30% glycerol, and 0.01% sodium azide.
Alternative Names	Myelin-oligodendrocyte glycoprotein
Gene Symbol	MOG
Entrez Gene	4340(Human); 17441(Mouse)
SwissProt	Q16653(Human); Q61885(Mouse); Q63345(Rat)

*AREX continuously optimizes our products. Webpage content may not reflect the latest updates. For inquiries, please contact info@arexbio.com or your local distributor.

*Clone Number, Reactivity, Source/Host and Clonality can be found in the product name and Key Features section above.

DATASHEET**MOG Rabbit Polyclonal Antibody**

CAT. NO. APA14441

DATA

Western blot analysis of MOG expression in mouse brain (A) whole cell lysates. (Predicted band size: 12- 14; 19-33 kD; Observed band size: 28 kD)

STORAGE

Store at 4°C short term. For long term storage, store at -20°C, avoiding freeze/thaw cycles.

NOTE

For Research Use Only. Not for diagnostic, therapeutics, prophylactic or in vivo use.