

DATASHEET

PEPD Rabbit Polyclonal Antibody

CAT. NO. APA14446

KEY FEATURES

| | | | |
|---------------|---|---------------|---------------------|
| Target | PEPD | Source / Host | Rabbit |
| Reactivity | Human, Mouse, Rat | Clonality | Polyclonal |
| Applications | WB | Conjugation | Unconjugated |
| Form / Buffer | Liquid in 0.42% Potassium phosphate, 0.87% Sodium chloride, pH 7.3, 30% glycerol, and 0.01% sodium azide. | | Storage at -20°C |

BACKGROUND

Dipeptidase that catalyzes the hydrolysis of dipeptides with a prolyl (Xaa-Pro) or hydroxyprolyl residue in the C-terminal position or hydroxyprolyl residue in the C-terminal position. The preferred dipeptide substrate is Gly-Pro, but other Xaa-Pro dipeptides, such as Ala-Pro, Met-Pro, Phe-Pro, Val-Pro and Leu-Pro, can be cleaved. Plays an important role in collagen metabolism because the high level of iminoacids in collagen.

APPLICATION

To ensure optimal assay performance, AREX recommends conducting reagent titration tailored to each testing system for optimal detection results.

| | |
|----|----------------|
| WB | 1:500 - 1:2000 |
|----|----------------|

*Results are sample-specific. Please refer to your local assay conditions and test parameters for reference.

PRODUCT OVERVIEW

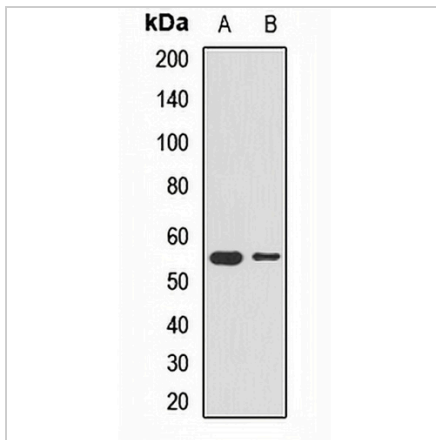
| | |
|-------------------|--|
| Description | Rabbit polyclonal antibody to PEPD |
| Specificity | Recognizes endogenous levels of PEPD protein. |
| Antibody Type | Primary antibody |
| Immunogen | Recombinant fusion protein of human PEPD |
| Purification | The antibody was purified by immunogen affinity chromatography. |
| Molecular Weight | Predicted: 47; Observed: 54 kD |
| Form/Buffer | Liquid in 0.42% Potassium phosphate, 0.87% Sodium chloride, pH 7.3, 30% glycerol, and 0.01% sodium azide. |
| Alternative Names | PRD; Xaa-Pro dipeptidase; X-Pro dipeptidase; Imidodipeptidase; Peptidase D; Proline dipeptidase; Prolidase |
| Gene Symbol | PEPD |
| Entrez Gene | 5184(Human); 18624(Mouse); 292808(Rat) |
| SwissProt | P12955(Human); Q11136(Mouse); Q5I0D7(Rat) |

*AREX continuously optimizes our products. Webpage content may not reflect the latest updates. For inquiries, please contact info@arexbio.com or your local distributor.

*Clone Number, Reactivity, Source/Host and Clonality can be found in the product name and Key Features section above.

DATASHEET**PEPD Rabbit Polyclonal Antibody**

CAT. NO. APA14446

DATA

Western blot analysis of PEPD expression in A549 (A), SHSY5Y (B) whole cell lysates. (Predicted band size: 47; 49; 54 kD; Observed band size: 54 kD)

STORAGE

Store at 4°C short term. For long term storage, store at -20°C, avoiding freeze/thaw cycles.

NOTE

For Research Use Only. Not for diagnostic, therapeutics, prophylactic or in vivo use.