

DATASHEET

PI3 Rabbit Polyclonal Antibody

CAT. NO. APA14449

KEY FEATURES

Target	PI3	Source / Host	Rabbit
Reactivity	Human, Mouse, Rat	Clonality	Polyclonal
Applications	WB, IHC	Conjugation	Unconjugated
Form / Buffer	Liquid in 0.42% Potassium phosphate, 0.87% Sodium chloride, pH 7.3, 30% glycerol, and 0.01% sodium azide.		Storage at -20°C

BACKGROUND

Neutrophil and pancreatic elastase-specific inhibitor of skin. It may prevent elastase-mediated tissue proteolysis. Has been shown to inhibit the alpha-4-beta-2/CHRNA2-CHRNA2 nicotinic acetylcholine receptor and to produce a weak inhibition on Kv11.1/KCNH2/ERG1 and on the transient receptor potential cation channel subfamily V member 1 (TRPV1).

APPLICATION

To ensure optimal assay performance, AREX recommends conducting reagent titration tailored to each testing system for optimal detection results.

WB	1:500 - 1:2000
IHC	1:50 - 1:200

*Results are sample-specific. Please refer to your local assay conditions and test parameters for reference.

PRODUCT OVERVIEW

Description	Rabbit polyclonal antibody to PI3
Specificity	Recognizes endogenous levels of PI3 protein.
Antibody Type	Primary antibody
Immunogen	Recombinant fusion protein of human PI3
Purification	The antibody was purified by immunogen affinity chromatography.
Molecular Weight	Predicted: 12 kD; Observed: 12 kD
Form/Buffer	Liquid in 0.42% Potassium phosphate, 0.87% Sodium chloride, pH 7.3, 30% glycerol, and 0.01% sodium azide.
Alternative Names	WAP3; WFDC14; Elafin; Elastase-specific inhibitor; ESI; Peptidase inhibitor 3; PI-3; Protease inhibitor WAP3; Skin-derived antileukoproteinase; SKALP; WAP four-disulfide core domain protein 14
Gene Symbol	PI3
Entrez Gene	5266(Human)
SwissProt	P19957(Human)

*AREX continuously optimizes our products. Webpage content may not reflect the latest updates. For inquiries, please contact info@arexbio.com or your local distributor.

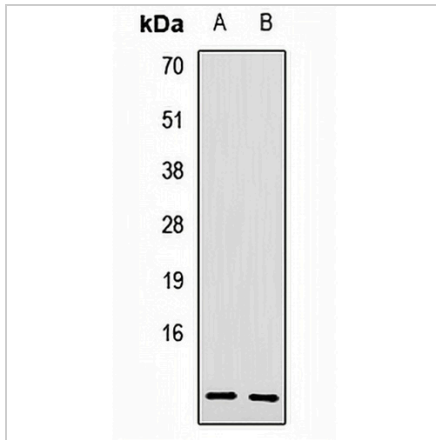
*Clone Number, Reactivity, Source/Host and Clonality can be found in the product name and Key Features section above.

DATASHEET

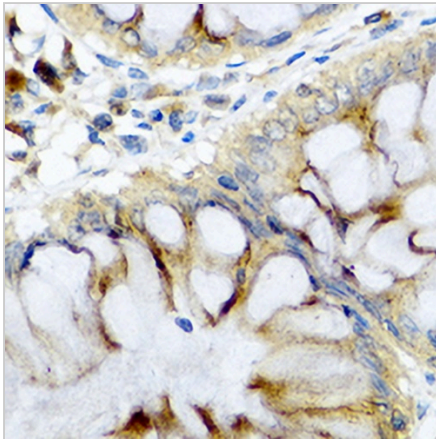
PI3 Rabbit Polyclonal Antibody

CAT. NO. APA14449

DATA



Western blot analysis of PI3 expression in U87 (A), HepG2 (B) whole cell lysates. (Predicted band size: 12 kD; Observed band size: 12 kD)



Immunohistochemical analysis of PI3 staining in human colon formalin fixed paraffin embedded tissue section. The section was pre-treated using heat mediated antigen retrieval with sodium citrate buffer (pH 6.0). The section was then incubated with the antibody at room temperature and detected using an HRP conjugated compact polymer system. DAB was used as the chromogen. The section was then counterstained with haematoxylin and mounted with DPX.

STORAGE

Store at 4°C short term. For long term storage, store at -20°C, avoiding freeze/thaw cycles.

NOTE

For Research Use Only. Not for diagnostic, therapeutics, prophylactic or in vivo use.