

DATASHEET

PPP2R5C Rabbit Polyclonal Antibody

CAT. NO. APA14452

KEY FEATURES

Target	PPP2R5C	Source / Host	Rabbit
Reactivity	Human, Mouse	Clonality	Polyclonal
Applications	WB	Conjugation	Unconjugated
Form / Buffer	Liquid in 0.42% Potassium phosphate, 0.87% Sodium chloride, pH 7.3, 30% glycerol, and 0.01% sodium azide.		Storage at -20°C

BACKGROUND

The B regulatory subunit might modulate substrate selectivity and catalytic activity, and might also direct the localization of the catalytic enzyme to a particular subcellular compartment. The PP2A-PPP2R5C holoenzyme may specifically dephosphorylate and activate TP53 and play a role in DNA damage-induced inhibition of cell proliferation. PP2A-PPP2R5C may also regulate the ERK signaling pathway through ERK dephosphorylation.

APPLICATION

To ensure optimal assay performance, AREX recommends conducting reagent titration tailored to each testing system for optimal detection results.

WB	1:500 - 1:1000
----	----------------

*Results are sample-specific. Please refer to your local assay conditions and test parameters for reference.

PRODUCT OVERVIEW

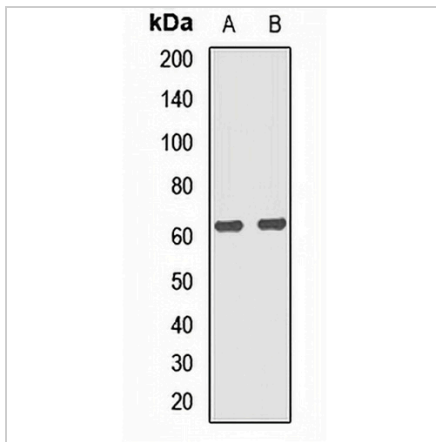
Description	Rabbit polyclonal antibody to PPP2R5C
Specificity	Recognizes endogenous levels of PPP2R5C protein.
Antibody Type	Primary antibody
Immunogen	Recombinant fusion protein of human PPP2R5C
Purification	The antibody was purified by immunogen affinity chromatography.
Molecular Weight	Predicted: 52; Observed: 68-71 kD
Form/Buffer	Liquid in 0.42% Potassium phosphate, 0.87% Sodium chloride, pH 7.3, 30% glycerol, and 0.01% sodium azide.
Alternative Names	KIAA0044; Serine/threonine-protein phosphatase 2A 56 kDa regulatory subunit gamma isoform; PP2A B subunit isoform B ¹ -gamma; PP2A B subunit isoform B56-gamma; PP2A B subunit isoform PR61-gamma; PP2A B subunit isoform R5-gamma; Renal carcinoma antigen NY-REN-29
Gene Symbol	PPP2R5C
Entrez Gene	5527(Human); 26931(Mouse)
SwissProt	Q13362(Human); Q60996(Mouse)

*AREX continuously optimizes our products. Webpage content may not reflect the latest updates. For inquiries, please contact info@arexbio.com or your local distributor.

*Clone Number, Reactivity, Source/Host and Clonality can be found in the product name and Key Features section above.

DATASHEET**PPP2R5C Rabbit Polyclonal Antibody**

CAT. NO. APA14452

DATA

Western blot analysis of PPP2R5C expression in K562 (A), mouse testis (B) whole cell lysates. (Predicted band size: 52; 56; 61; 62; 64 kD; Observed band size: 68-71 kD)

STORAGE

Store at 4°C short term. For long term storage, store at -20°C, avoiding freeze/thaw cycles.

NOTE

For Research Use Only. Not for diagnostic, therapeutics, prophylactic or in vivo use.