

**DATASHEET**

**CBX4 Rabbit Polyclonal Antibody**

CAT. NO. APA14455

**KEY FEATURES**

Target	CBX4	Source / Host	Rabbit
Reactivity	Human, Mouse, Rat	Clonality	Polyclonal
Applications	WB	Conjugation	Unconjugated
Form / Buffer	Liquid in 0.42% Potassium phosphate, 0.87% Sodium chloride, pH 7.3, 30% glycerol, and 0.01% sodium azide.		Storage at -20°C

**BACKGROUND**

E3 SUMO-protein ligase that catalyzes sumoylation of target proteins by promoting the transfer of SUMO from the E2 enzyme to the substrate . Also acts as a histone reader, which specifically recognizes and binds histone H3 trimethylated at 'Lys-9' and 'Lys-27' (H3K9me3 and H3K27me3, respectively) via its chromo domain . Catalyzes sumoylation of HNRNPK, a p53/TP53 transcriptional coactivator, hence indirectly regulates p53/TP53 transcriptional activation resulting in p21/CDKN1A expression . Acts as a regulator of brown adipocyte differentiation by mediating sumoylation of PRDM16, thereby preventing PRDM16 ubiquitination and degradation . Monosumoylates ZNF131 .

**APPLICATION**

To ensure optimal assay performance, AREX recommends conducting reagent titration tailored to each testing system for optimal detection results.

WB	1:500 - 1:2000
----	----------------

\*Results are sample-specific. Please refer to your local assay conditions and test parameters for reference.

**PRODUCT OVERVIEW**

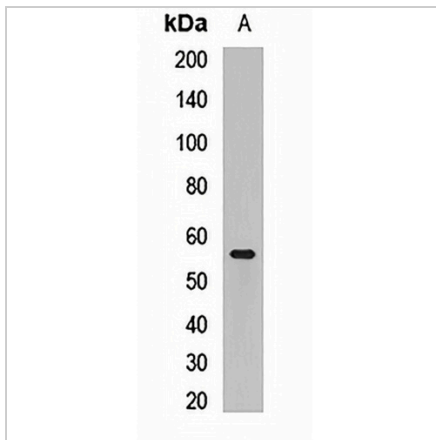
Description	Rabbit polyclonal antibody to CBX4
Specificity	Recognizes endogenous levels of CBX4 protein.
Antibody Type	Primary antibody
Immunogen	KLH-conjugated synthetic peptide of human CBX4
Purification	The antibody was purified by immunogen affinity chromatography.
Molecular Weight	Predicted: 61 kD; Observed: 57 kD
Form/Buffer	Liquid in 0.42% Potassium phosphate, 0.87% Sodium chloride, pH 7.3, 30% glycerol, and 0.01% sodium azide.
Alternative Names	E3 SUMO-protein ligase CBX4; Chromobox protein homolog 4; Polycomb 2 homolog; Pc2; hPc2
Gene Symbol	CBX4
Entrez Gene	8535(Human); 12418(Mouse)
SwissProt	O00257(Human); O55187(Mouse)

\*AREX continuously optimizes our products. Webpage content may not reflect the latest updates. For inquiries, please contact [info@arexbio.com](mailto:info@arexbio.com) or your local distributor.

\*Clone Number, Reactivity, Source/Host and Clonality can be found in the product name and Key Features section above.

**DATASHEET****CBX4 Rabbit Polyclonal Antibody**

CAT. NO. APA14455

**DATA**

Western blot analysis of CBX4 expression in Jurkat (A) whole cell lysates. (Predicted band size: 61 kD; Observed band size: 57 kD)

**STORAGE**

Store at 4°C short term. For long term storage, store at -20°C, avoiding freeze/thaw cycles.

**NOTE**

For Research Use Only. Not for diagnostic, therapeutics, prophylactic or in vivo use.