

**DATASHEET**

**CDC5L Rabbit Polyclonal Antibody**

CAT. NO. APA14458

**KEY FEATURES**

Target	CDC5L	Source / Host	Rabbit
Reactivity	Human, Mouse	Clonality	Polyclonal
Applications	WB	Conjugation	Unconjugated
Form / Buffer	Liquid in 0.42% Potassium phosphate, 0.87% Sodium chloride, pH 7.3, 30% glycerol, and 0.01% sodium azide.		Storage at -20°C

**BACKGROUND**

DNA-binding protein involved in cell cycle control. May act as a transcription activator. Plays a role in pre-mRNA splicing as core component of precatalytic, catalytic and postcatalytic spliceosomal complexes . Component of the PRP19-CDC5L complex that forms an integral part of the spliceosome and is required for activating pre-mRNA splicing. The PRP19-CDC5L complex may also play a role in the response to DNA damage (DDR) . As a component of the minor spliceosome, involved in the splicing of U12-type introns in pre-mRNAs (Probable).

**APPLICATION**

To ensure optimal assay performance, AREX recommends conducting reagent titration tailored to each testing system for optimal detection results.

WB	1:500 - 1:1000
----	----------------

\*Results are sample-specific. Please refer to your local assay conditions and test parameters for reference.

**PRODUCT OVERVIEW**

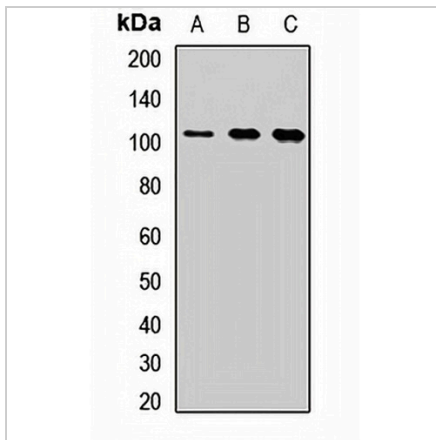
Description	Rabbit polyclonal antibody to CDC5L
Specificity	Recognizes endogenous levels of CDC5L protein.
Antibody Type	Primary antibody
Immunogen	Recombinant fusion protein of human CDC5L
Purification	The antibody was purified by immunogen affinity chromatography.
Molecular Weight	Predicted: 92 kD; Observed: 107 kD
Form/Buffer	Liquid in 0.42% Potassium phosphate, 0.87% Sodium chloride, pH 7.3, 30% glycerol, and 0.01% sodium azide.
Alternative Names	KIAA0432; PCDC5RP; Cell division cycle 5-like protein; Cdc5-like protein; Pombe cdc5-related protein
Gene Symbol	CDC5L
Entrez Gene	988(Human); 71702(Mouse)
SwissProt	Q99459(Human); Q6A068(Mouse)

\*AREX continuously optimizes our products. Webpage content may not reflect the latest updates. For inquiries, please contact [info@arexbio.com](mailto:info@arexbio.com) or your local distributor.

\*Clone Number, Reactivity, Source/Host and Clonality can be found in the product name and Key Features section above.

**DATASHEET****CDC5L Rabbit Polyclonal Antibody**

CAT. NO. APA14458

**DATA**

Western blot analysis of CDC5L expression in MCF7 (A), K562 (B), mouse testis (C) whole cell lysates. (Predicted band size: 92 kD; Observed band size: 107 kD)

**STORAGE**

Store at 4°C short term. For long term storage, store at -20°C, avoiding freeze/thaw cycles.

**NOTE**

For Research Use Only. Not for diagnostic, therapeutics, prophylactic or in vivo use.