

DATASHEET

L-Plastin Rabbit Polyclonal Antibody

CAT. NO. APA14459

KEY FEATURES

Target	L-Plastin	Source / Host	Rabbit
Reactivity	Human, Mouse, Rat	Clonality	Polyclonal
Applications	WB, IP	Conjugation	Unconjugated
Form / Buffer	Liquid in 0.42% Potassium phosphate, 0.87% Sodium chloride, pH 7.3, 30% glycerol, and 0.01% sodium azide.		Storage at -20°C

BACKGROUND

Actin-binding protein . Plays a role in the activation of T-cells in response to costimulation through TCR/CD3 and CD2 or CD28 . Modulates the cell surface expression of IL2RA/CD25 and CD69 .

APPLICATION

To ensure optimal assay performance, AREX recommends conducting reagent titration tailored to each testing system for optimal detection results.

WB	1:500 - 1:1000
IP	1:10 - 1:50

*Results are sample-specific. Please refer to your local assay conditions and test parameters for reference.

PRODUCT OVERVIEW

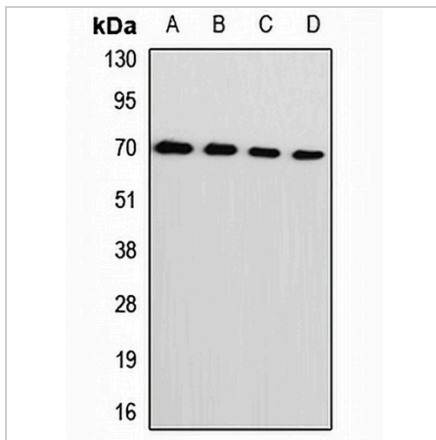
Description	Rabbit polyclonal antibody to L-Plastin
Specificity	Recognizes endogenous levels of L-Plastin protein.
Antibody Type	Primary antibody
Immunogen	Recombinant fusion protein of human L-Plastin
Purification	The antibody was purified by immunogen affinity chromatography.
Molecular Weight	Predicted: 21; Observed: 70 kD
Form/Buffer	Liquid in 0.42% Potassium phosphate, 0.87% Sodium chloride, pH 7.3, 30% glycerol, and 0.01% sodium azide.
Alternative Names	PLS2; Plastin-2; L-plastin; LC64P; Lymphocyte cytosolic protein 1; LCP-1
Gene Symbol	LCP1
Entrez Gene	3936(Human); 18826(Mouse)
SwissProt	P13796(Human); Q61233(Mouse)

*AREX continuously optimizes our products. Webpage content may not reflect the latest updates. For inquiries, please contact info@arexbio.com or your local distributor.

*Clone Number, Reactivity, Source/Host and Clonality can be found in the product name and Key Features section above.

DATASHEET**L-Plastin Rabbit Polyclonal Antibody**

CAT. NO. APA14459

DATA

Western blot analysis of L-Plastin expression in SW620 (A), Raji (B), mouse liver (C), mouse lung (D) whole cell lysates. (Predicted band size: 21; 70 kD; Observed band size: 70 kD)

STORAGE

Store at 4°C short term. For long term storage, store at -20°C, avoiding freeze/thaw cycles.

NOTE

For Research Use Only. Not for diagnostic, therapeutics, prophylactic or in vivo use.