

DATASHEET

MLKL Rabbit Polyclonal Antibody

CAT. NO. APA14460

KEY FEATURES

Target	MLKL	Source / Host	Rabbit
Reactivity	Human	Clonality	Polyclonal
Applications	WB, IHC, IF/ICC	Conjugation	Unconjugated
Form / Buffer	Liquid in 0.42% Potassium phosphate, 0.87% Sodium chloride, pH 7.3, 30% glycerol, and 0.01% sodium azide.		Storage at -20°C

BACKGROUND

Pseudokinase that plays a key role in TNF-induced necroptosis, a programmed cell death process . Does not have protein kinase activity . Activated following phosphorylation by RIPK3, leading to homotrimerization, localization to the plasma membrane and execution of programmed necrosis characterized by calcium influx and plasma membrane damage .

APPLICATION

To ensure optimal assay performance, AREX recommends conducting reagent titration tailored to each testing system for optimal detection results.

WB	1:500 - 1:2000
IHC	1:50 - 1:200
IF/ICC	1:50 - 1:200

*Results are sample-specific. Please refer to your local assay conditions and test parameters for reference.

PRODUCT OVERVIEW

Description	Rabbit polyclonal antibody to MLKL
Specificity	Recognizes endogenous levels of MLKL protein.
Antibody Type	Primary antibody
Immunogen	Recombinant fusion protein of human MLKL
Purification	The antibody was purified by immunogen affinity chromatography.
Molecular Weight	Predicted: 53; Observed: 54 kD
Form/Buffer	Liquid in 0.42% Potassium phosphate, 0.87% Sodium chloride, pH 7.3, 30% glycerol, and 0.01% sodium azide.
Alternative Names	Mixed lineage kinase domain-like protein; hMLKL
Gene Symbol	MLKL
Entrez Gene	197259(Human); 74568(Mouse)
SwissProt	Q8NB16(Human); Q9D2Y4(Mouse)

*AREX continuously optimizes our products. Webpage content may not reflect the latest updates. For inquiries, please contact info@arexbio.com or your local distributor.

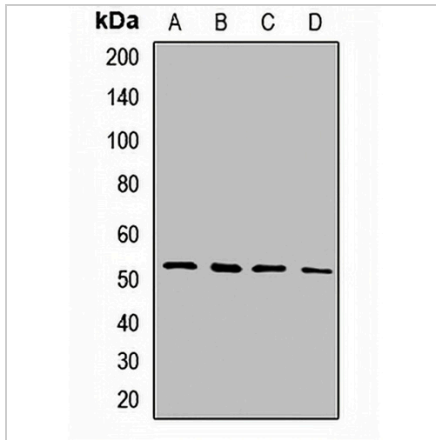
*Clone Number, Reactivity, Source/Host and Clonality can be found in the product name and Key Features section above.

DATASHEET

MLKL Rabbit Polyclonal Antibody

CAT. NO. APA14460

DATA



Western blot analysis of MLKL expression in HeLa (A), Jurkat (B), HT1080 (C), NCIH460 (D) whole cell lysates. (Predicted band size: 53; 54 kD; Observed band size: 54 kD)

Data 2

Immunohistochemical analysis of MLKL staining in human liver cancer formalin fixed paraffin embedded tissue section. The section was pre-treated using heat mediated antigen retrieval with sodium citrate buffer (pH 6.0). The section was then incubated with the antibody at room temperature and detected using an HRP conjugated compact polymer system. DAB was used as the chromogen. The section was then counterstained with haematoxylin and mounted with DPX.

STORAGE

Store at 4°C short term. For long term storage, store at -20°C, avoiding freeze/thaw cycles.

NOTE

For Research Use Only. Not for diagnostic, therapeutics, prophylactic or in vivo use.